

DirectCD[™]

Software Operating Instructions

MVC-CD200/CD300

Notice for users

Program © Copyright 1999 Adaptec, Inc. All rights reserved./
Documentation ©2001 Sony Corporation

All rights reserved. This manual or the software described herein, in whole or in part, may not be reproduced, translated or reduced to any machine readable form without prior written approval from Sony Corporation.

IN NO EVENT SHALL SONY CORPORATION BE LIABLE FOR ANY INCIDENTAL, CONSEQUENTIAL OR SPECIAL DAMAGES, WHETHER BASED ON TORT, CONTRACT, OR OTHERWISE, ARISING OUT OF OR IN CONNECTION WITH THIS MANUAL, THE SOFTWARE OR OTHER INFORMATION CONTAINED HEREIN OR THE USE THEREOF.

Sony Corporation reserves the right to make any modification to this manual or the information contained herein at any time without notice.

The software described herein may also be governed by the terms of a separate user license agreement.

Trademarks

- Adaptec is a registered trademark of Adaptec, Inc.
- Easy CD Creator and DirectCD are trademarks of Adaptec, Inc.
- Microsoft and Windows are trademarks of Microsoft Corporation, registered in the U.S.A. and other countries.
- Macintosh and Power PC are trademarks of Apple Computer, Inc. registered in the U.S.A. and other countries.
- All other product names mentioned herein may be the trademarks or registered trademarks of their respective companies. Furthermore, “™” and “®” are not mentioned in each case in this manual.

Table of contents

Notice for users	2
Introduction	4
Notes on using DirectCD	6
When using a CD-R	6
When using a CD-RW	7
Installing DirectCD	8
Using DirectCD	10
Starting DirectCD	10
Writing data to a disc	11
Removing the disc	12
When using a CD-R	12
When using a CD-RW	13
Modifying data in a disc	14
Writing more data to a disc	14
Deleting a file from a disc	14

Some of the operation procedures is different according to whether you use a CD-R or you use a CD-RW. For details on each operation, see “Notes on using DirectCD” on page 6 or “Removing the disc” on page 12.

Introduction

This manual describes how to install the application software, DirectCD supplied with the camera, and how to use it. If explanations described in this manual are different from the PDF file in the CD-ROM, follow explanations described in this manual.

Note

You cannot install DirectCD into a Macintosh computer. To read the disc that has been finalized, copy Adaptec UDF Volume Access included in the CD-ROM (SPVD-006) supplied with the camera to System folder of your computer and restart your computer.

What DirectCD does

Once you install DirectCD into your computer, and connect the camera and the computer with the USB cable, you can do the following operations:

- You can send images shot with the camera to your computer and play them back on your computer. (The finalization is not required.)
- You can directly read and write images shot with the camera on a CD-R/RW-equipped computer without executing the finalization.

Recommended Windows environment for DirectCD

- MMX Pentium 166 MHz or faster (When using DirectCD with the camera: MMX Pentium 200 MHz or faster)
- 32 MB or more of RAM
- 45 MB or more of free hard-disk space
- Monitor with 800×600-resolution and 256-color
- Microsoft Internet Explorer 4.01 or later
- OS: Microsoft Windows 95, Windows 98, Windows 98SE, Windows Me, Windows 2000 Professional

Recommend Windows environment for USB connection with the camera

- OS: Microsoft Windows 98, Windows 98SE, Windows Me, Windows 2000 Professional

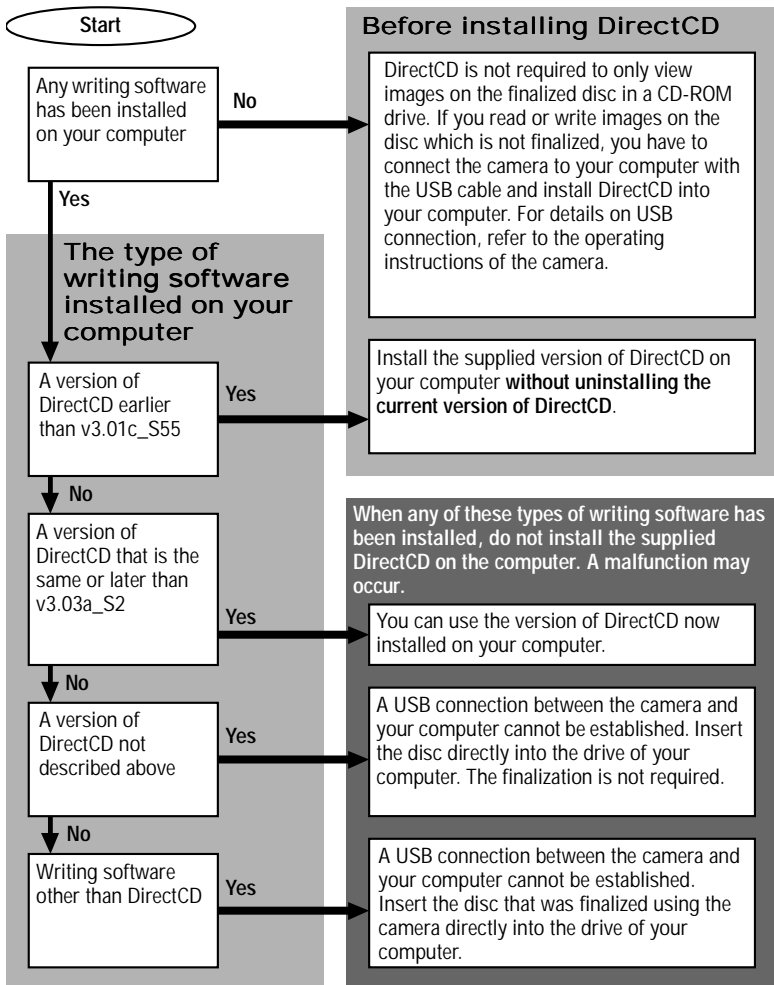
The above OS is required to be installed at the factory. Operation is not assured in an environment upgraded to the operating systems described above.

- CPU: MMX Pentium 200 MHz or faster
- The USB connector must be provided as standard.

Notes on using DirectCD

When using a CD-R

The supplied writing software, **DirectCD v3.01c_S55**, is required to connect the camera and a computer using the USB connector. If any other CD-R/RW writing software has been installed on your computer, check the chart below.



To check the version of your DirectCD software

Click in the following order: [Start] → [Program] → [Adaptec DirectCD] → [DirectCD Wizard]. You can check the version on the start up screen.

When using a CD-RW

- You cannot use the CD-RW which was formatted with other equipment than the camera. Format it with the camera again.
- To view images on the CD-RW using a CD-ROM drive or CD-R drive, the drive must conform to the MultiRead type.
- When using a CD-RW drive, you can use DirectCD in the same way you would be using a CD-R.

Note

You may not be able to use DirectCD depending on your CD-R drive or CD-RW drive.

Installing DirectCD

When connecting the camera to your computer using the USB cable, be sure to install the USB driver before connecting the USB cable. For details, refer to the operating instructions of the camera.

E.g., for Windows Me users

Follow these steps below to install DirectCD. English version illustrations are used in this manual.

1 Turn on your computer and insert the supplied CD-ROM (SPVD-006) into the CD-ROM drive of your computer.

The following window appears on the screen.

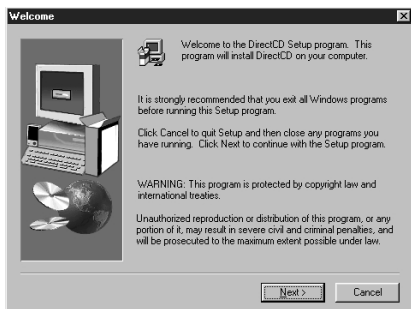


Click here.

If the window above is not displayed, start up “SETUP.EXE” in the CD-ROM.

2 Select the language.

-
- 3 Click [DirectCD].**
The “Welcome” window appears on the screen.



-
- 4 Click [Next].**
-
- 5 Read the text on the window carefully, and if you accept it, click [Yes].**
-
- 6 Check the folder in which DirectCD will be installed.**
When you install DirectCD into another folder other than the default one, click [Browse...], and select the folder.
-
- 7 Click [Next].**
The setup of the program starts. When the installation is complete, the screen returns to the window displayed in step **1**.
-
- 8 Click [Exit].**
The “Setup Complete” window appears on the screen.
-

DirectCD will be available after you restart your computer. Check the option [Yes] then click [Finish].

Note on Easy CD Creator

You cannot use Easy CD Creator with the camera connected to your computer with the USB cable.

Using DirectCD

You have to install the USB driver into your computer to connect the camera to your computer with the USB cable.

Do not connect your camera to your computer before installing the USB driver.

For details on the installation of the USB driver and on the directory, refer to the operating instructions of the camera.

Note

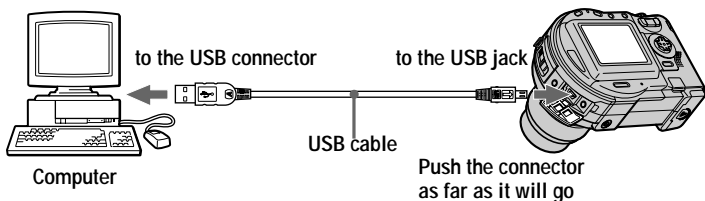
When you write new data onto the disc, before removing the disc from the camera, be sure to follow the procedure for removing the disc (page 12). If you remove the disc or disconnect the USB cable, without following the procedure, data on the disc may be broken.

Starting DirectCD

Do not initialize discs using DirectCD (this means that selecting [Format] from the DirectCD screen). Be sure to initialize discs using your camera.


Initialization described in the operating instructions of the camera or selecting [Format] on the DirectCD screen is required for using a disc, however, these do not have compatibility each other. And “format” described in the operating instructions of the camera is to erase all the files in the CD-RW, and this is different from [Format] on the DirectCD screen.

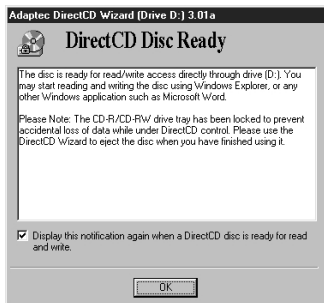
- 1 After starting up your computer, insert a disc into the camera, and connect to your computer with the USB cable.**



2 Turn on the camera and your computer.

“DirectCD Disc Ready” appears on the screen.

If this screen does not appear, double-click the CD icon  on the Windows taskbar, in the lower corner of your screen.



3 Click [OK].

Writing data to a disc

Once your disc is formatted as a DirectCD disc, you can write data to it in several different ways:

- To drag and drop files from Windows Explorer onto the disc drive icon.
- To select [Save As] from the File menu of a Windows application and select the drive letter of the camera.
- To use the [Send To] command.
- To use MS-DOS command prompts from a DOS window in Windows.

Notes

- If the file name format of images does not correspond to the following format, DSC0□□□□.JPG, you cannot play them back on the camera. For details, refer to the operating instructions of the camera.
- Depending on the file type, the file may not be able to be played back on the camera.

Removing the disc

Note

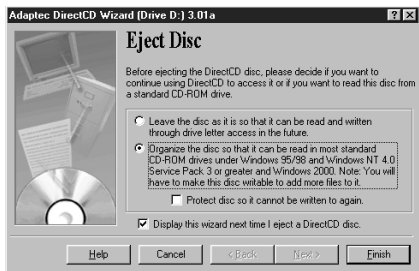
When you write new data onto the disc, before removing the disc from the camera, be sure to follow the procedure below. If you remove the disc or disconnect the USB cable, without following the procedure, data on the disc may be broken.

When you open the file in the disc with your application software, quit it before starting the procedure below.

When using a CD-R


- 1 Right-click the DirectCD icon  on the taskbar and select [Eject] from the drop-down list box.**

The “Eject Disc” window appears.



- 2 Check the appropriate option.**
 - If you do not execute the finalization**, click the upper option on the window.
 - If you execute the finalization to view images on a CD-ROM drive**, click the lower option on the window. When you will not add or modify data on the disc any more, also, check the “Protect disc so it cannot be written to again” option.
- 3 Check that the ACCESS lamp is not lit, then open the disc cover and remove the disc.**

When using a CD-RW

- 1** Right-click the DirectCD icon  on the taskbar and select [Eject] from the drop-down list box.
- 2** Check that the ACCESS lamp is not lit, click [OK] on the screen, then open the disc cover and remove the disc.

Modifying data in a disc

Writing more data to a disc

After you have formatted a blank disc for DirectCD use, you can keep adding data to the disc until it is full. To do so, follow these steps:

- 1 Insert the disc into the camera and connect the camera to your computer with the USB cable.**
- 2 After the “DirectCD Disc Ready” window appears, click [OK], then write data to the disc.**

Deleting a file from a disc

If you delete files from a disc, the files become invisible to the file system (that is, they cannot be seen in Windows Explorer) but the space they occupy is not available for other files.

Thus, deleting files from a disc does not increase the available free space on the disc. To delete the contents on a disc, follow these steps:

- 1 While in Windows Explorer, select the file(s) you want to delete.**
- 2 Select [Delete] from the File menu, or press the Delete key.**
- 3 Click [Yes] to confirm that you want to delete the files from the disc.**
The selected files will be deleted.

Printed on recycled paper

Printed using vegetable oil ink with less
than 1% VOC (Volatile Organic
Compound).

<http://www.world.sony.com/>

Sony Corporation Printed in Japan



3 0 6 7 9 5 2 1 2