

Cassette-Corder

Operating Instructions

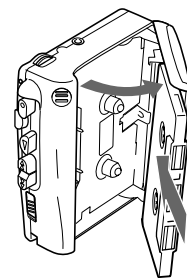
TCM-343/16

Sony Corporation © 2000

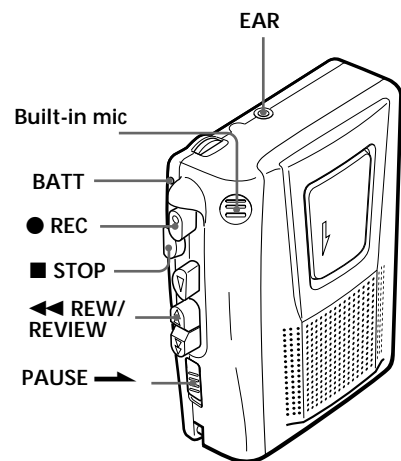
Sony online <http://www.world.sony.com/>

B

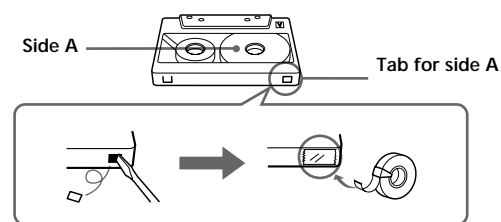
a



b

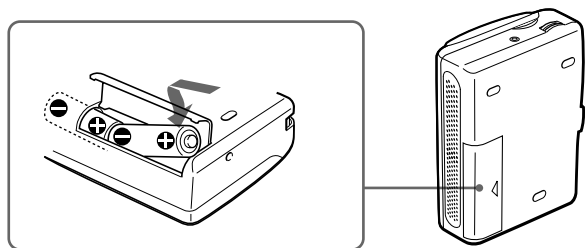


c

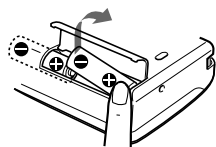


A

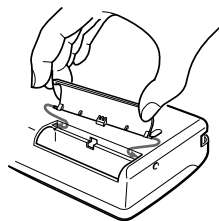
a



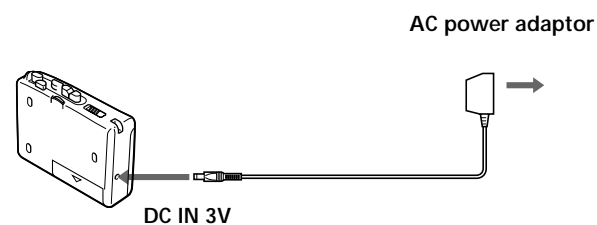
b



c



d



About this manual

The instructions in this manual are for 2 models. The TCM-343 is the model used for illustration purposes.

TCM-	343	16
DC IN 3V jack	○	—

○ : provided or supplied
— : not provided or not supplied

▶ Getting Started

Preparing a Power Source

Choose one of the following power sources.

Dry Batteries (see Fig. A-②)

Make sure that nothing is connected to the DC IN 3V jack (TCM-343 only).

- 1 Open the battery compartment lid.
- 2 Insert two size R6 (AA) batteries (TCM-16 for Canada: supplied) with correct polarity and close the lid.

Notes

- Do not charge a dry battery.
- Do not use a new battery with an old one.
- Do not use different types of batteries.
- When you do not use the unit for a long time, remove the batteries to avoid any damage caused by battery leakage and subsequent corrosion.
- Dry batteries will not be expended when another power source is connected (TCM-343 only).

To take out the batteries (see Fig. A-⑤)

To attach the battery compartment lid if it is accidentally detached (see Fig. A-③)

When to replace the batteries (see Fig. A-⑥)

Replace the batteries with new ones when the BATT lamp dims.

Notes

- After the batteries have been used for a while, the BATT lamp may flicker with the playback sound when you turn up the volume; however, this does not mean that you need to replace the batteries.
- The unit will play back normally for a while even after the BATT lamp dims. However, replace the batteries as soon as you can. If you do not, subsequent recording will not be done correctly.

Battery life (Approx. hours) (EIAJ*)

	Playback	Recording
Sony alkaline LR6 (SG)	11	11
Sony R6P (SR)	3	3

* Measured value by the standard of EIAJ (Electronic Industries Association of Japan). (Using a Sony HF series cassette tape and playing back with speakers)

Note

The battery life may shorten depending on the operation of the unit.

For maximum performance we recommend that you use alkaline batteries.

House Current (TCM-343 only) (see Fig. A-④)

Connect the AC power adaptor to DC IN 3V and to a wall outlet. Use the AC-E30HG AC power adaptor (not supplied). Do not use any other AC power adaptor.



Note

Specifications for AC-E30HG vary for each area. Check your local voltage and the shape of the plug before purchasing.

▶ Operating the Unit

Recording

(see Fig. B-④, ⑤)

You can record right away with the built-in microphone.

- 1 Insert a normal (TYPE I) tape with the side to start facing the cassette holder.
- 2 Press ● REC.
▶ PLAY is pressed simultaneously and recording starts.

At the end of the tape, recording stops and the unit turns off automatically.

To	Press or slide
Stop recording	■ STOP
Pause recording	PAUSE ⇐ in the direction of the arrow To release pause recording, release PAUSE ⇐*.
Review the portion just recorded	Press and hold ◀◀ REW/REVIEW during recording. Release the button at the point to start.
Take out a cassette	Press ■ STOP and open the cassette compartment lid by hand.

* PAUSE ⇐ will also be automatically released when ■ STOP is pressed (stop-pause-release function).

To monitor the sound

Connect an earphone (not supplied) firmly to the EAR jack.

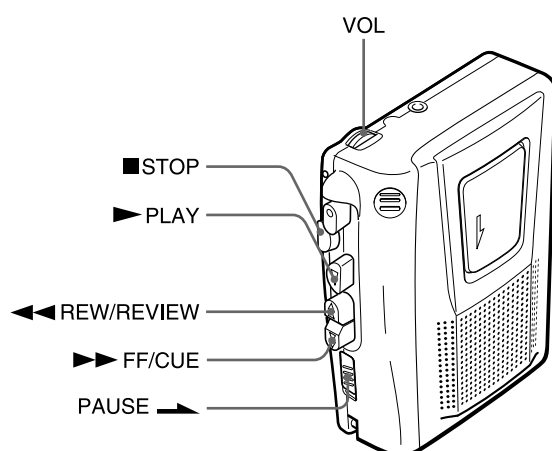
Note

Do not use a High-position (TYPE II) or metal (TYPE IV) tape, otherwise the sound may be distorted when you play back the tape, or the previous recording may not be erased completely.

To prevent a tape from being accidentally recorded over (see Fig. B-④)

Break off and remove the cassette tabs. To reuse the tape for recording, cover the tab hole with adhesive tape.

C



Playing a Tape (see Fig. C)

- 1 Insert a cassette with the side to start playing facing the cassette holder.
- 2 Press ► PLAY and then adjust the volume. There is a raised dot beside VOL to show the direction to turn down volume.

At the end of the tape, playback stops and the unit turns off automatically.

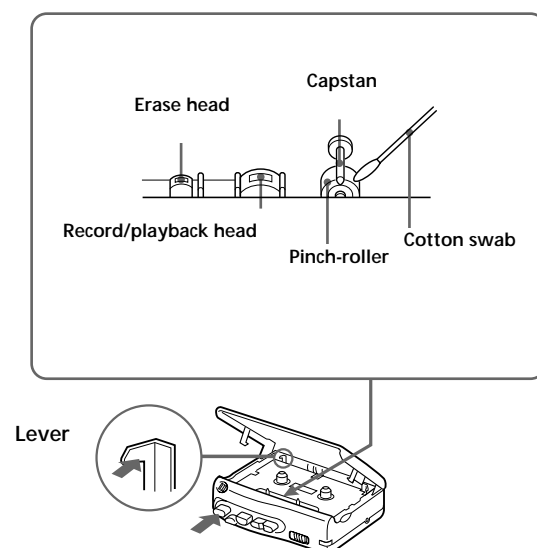
If you plug in headphones (not supplied) to the EAR jack, you will get monaural output from both left and right channels.

To	Press or slide
Stop playback/ stop fast forward or rewind	■ STOP
Pause playback	PAUSE ◄► in the direction of the arrow To release playback, release PAUSE
Search forward during playback (CUE)	Press and hold ►► FF/CUE and release it at the point you want.
Search backward during playback (REVIEW)	Press and hold ◀◀ REW/REVIEW and release it at the point you want.
Fast forward**	►► FF/CUE during stop
Rewind**	◀◀ REW/REVIEW during stop
Start recording during playback	● REC
Take out a cassette	Press ■ STOP and open the cassette compartment lid by hand.

* PAUSE ◄► will also be automatically released when ■ STOP is pressed (stop-pause-release function).

**If you leave the unit after the tape has been wound or rewound, the batteries will be consumed rapidly. Be sure to depress ■ STOP.

D



► Additional Information

Precautions

On power

- Operate the unit only on 3 V DC. For AC operation, use the AC power adaptor recommended for the unit (TCM-343 only). Do not use any other type. For battery operation, use two size R6 (AA) batteries.

On the unit

- Do not leave the unit in a location near heat sources, or in a place subject to direct sunlight, excessive dust or mechanical shock.
- Should any solid object or liquid fall into the unit, remove the batteries or disconnect the AC power adaptor (TCM-343 only), and have the unit checked by qualified personnel before operating it any further.
- Keep personal credit cards using magnetic coding or spring-wound watches etc. away from the unit to prevent possible damage from the magnet used for the speaker.
- If the unit has not been used for a long time, set it in the playback mode to warm it up for a few minutes before inserting a tape.

On tapes longer than 90 minutes

We do not recommend the use of tapes longer than 90 minutes except for a long continuous recording or playback. They are very thin and tend to be stretched easily.

If you have any questions or problems concerning your unit, please consult your nearest Sony dealer.

Maintenance

(see Fig. D)

To clean the tape heads and path

Depress ● REC while pushing the lever.

Wipe the heads, pinch roller, and the capstan with a cotton swab moistened with alcohol after every 10 hours of use.

To clean the exterior

Use a soft cloth slightly moistened in water. Do not use alcohol, benzine or thinner.

Troubleshooting

Should any problem persist after you have made these checks, consult your nearest Sony dealer.

You cannot press ● REC.

- The tab on the tape has been removed.

You cannot press ► PLAY.

- The tape has reached the end. Rewind the tape.

The unit does not operate.

- The batteries have been inserted with incorrect polarity.
- The batteries are weak.
- PAUSE ◄► is slid in the direction of the arrow.
- The AC power adaptor is not firmly connected (TCM-343 only).
- When trying to run on dry batteries, the AC power adaptor has been left plugged in to the DC IN 3V jack, but not to the power source (TCM-343 only).

No sound comes from the speaker.

- The earphone is plugged in.
- The volume is turned down completely.

The sound drops out or comes with excessive noise.

- The volume is turned down completely.
- The batteries are weak.
- The heads are contaminated. See "Maintenance."

Recording cannot be made.

- Connection is made incorrectly.
- The batteries are weak.
- The record/playback head is contaminated.

Recording cannot be erased completely.

- The erase head is contaminated.
- Recording or erasing is being made using a High-position (TYPE II) or metal (TYPE IV) tape.

Specifications

Recording system
2-track 1 channel monaural

Frequency range
250 - 6 300 Hz

Speaker

Approx. 3.6 cm (1 7/16 in.) dia.

Power output (at 10% harmonic distortion)

TCM-343 : 250 mW

TCM-16 : 130 mW

Output

Earphone jack (minijack) for 8 - 300 Ω earphone

Power requirements

- 3 V DC batteries R6 (AA) × 2
- External DC 3 V power sources (TCM-343 only)

Dimensions (w/h/d) (incl. projecting parts and controls)

Approx. 112 × 36.6 × 90.3 mm

(4 1/2 × 1 1/2 × 3 3/8 in.)

Mass (not incl. batteries)

Approx. 180 g (6.4 oz.)

Supplied accessories

Cassette tape C-90 (1) (TCM-16 for Canada only)
Sony battery R6P (SR) (2) (TCM-16 for Canada only)

Design and specifications are subject to change without notice.