

Radio Cassette-Corder

Operating instructions 使用说明书



WM-GX400

©2001 Sony Corporation Printed in China

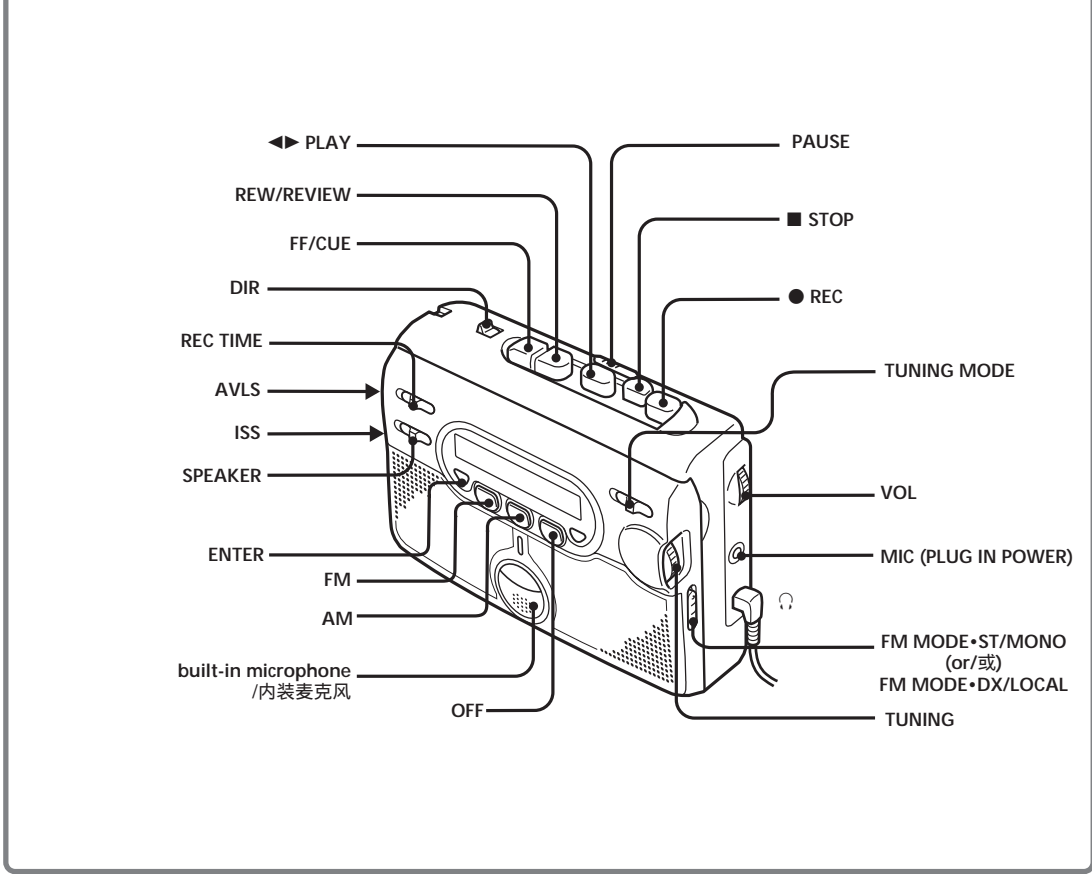
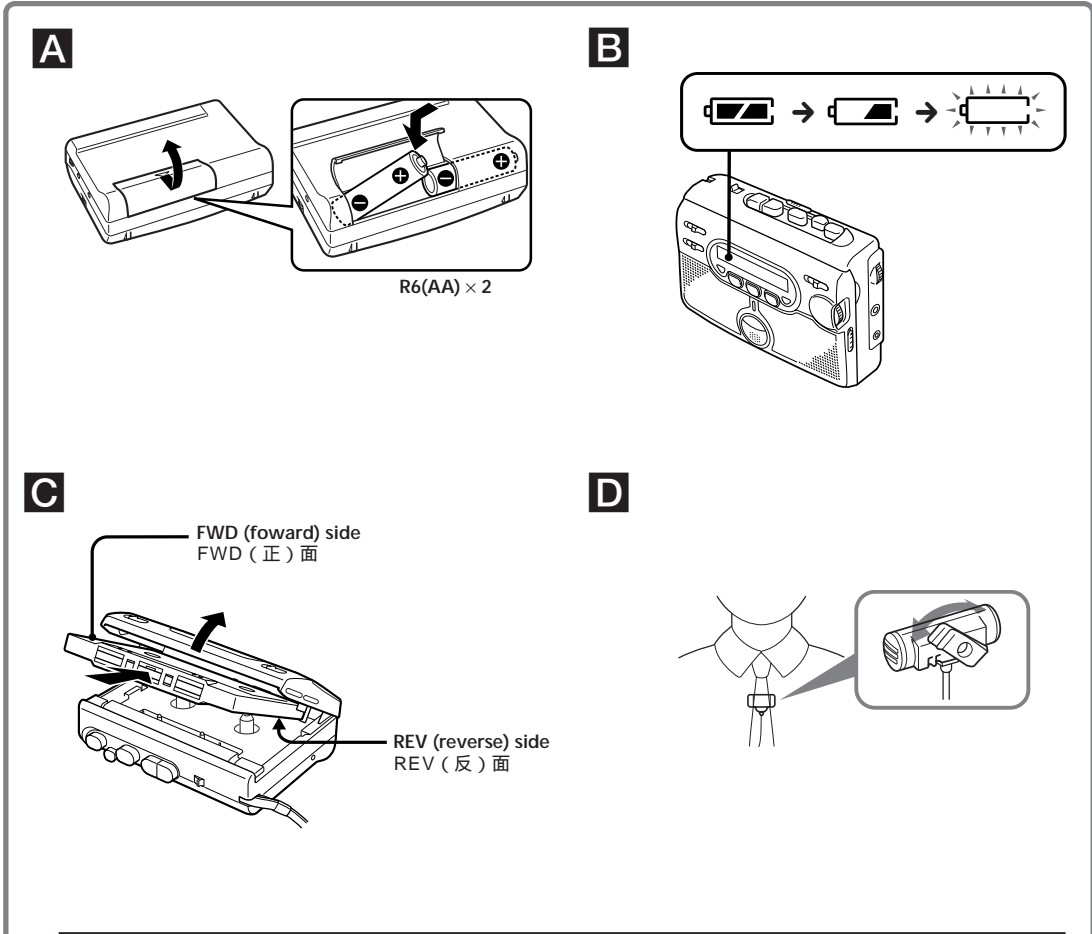
http://www.sony.net/

"WALKMAN" is a registered trademark of Sony Corporation to represent Headphone Stereo products.

is a trademark of Sony Corporation.

The validity of the CE marking is restricted to only those countries where it is legally enforced, mainly in the countries EEA (European Economic Area).

CE 标志的有效性，仅限于那些有法律限制的国家，主要在 EEA（欧洲经济区）国家。



English

Preparations

To Insert batteries **A**

Slide open the battery compartment lid, and insert two R6 (size AA) dry batteries with correct polarity.

Replace the batteries with new ones when "□" flashes in the display. **B**

Notes

- For maximum performance we recommend that you use Sony alkaline batteries.
- Be sure to replace both batteries within 2 minutes. Otherwise, the preset radio stations will be cancelled.

Recording

Notes

- If the record-protect tab is broken, you cannot record on that side.
- Tapes recorded with the REC TIME switch in the DOUBLE position cannot be played properly by a tape recorder without that recording mode function.
- Use new batteries when recording.
- When recording with the microphone, the sound to be recorded cannot be heard through the speakers and headphones/earphones.

- 1 Insert a normal (TYPE I) tape. **C**
To record on both sides:
 Insert the cassette with the side to be first recorded on as the FWD side, and set DIR to FWD.
To record on one side only:
 Insert the cassette with the side to be recorded on as the REV side, and set DIR to REV.

- 2 Set REC TIME to the desired position.
NORMAL (4.8 cm/s): for optimum sound. Recommended for normal recordings.
DOUBLE (2.4 cm/s): for double recording time (for example, 120 minutes using both sides of a 60-minute cassette). Suitable for recording conferences, dictations, etc. Not recommended to record music.

- 3 Select a recording source.
To record with the built-in microphone:
 Place the unit on a hard surface (such as a desk) with the cassette holder side up, so that the microphone can record effectively.
To record with the microphone:
 Connect the supplied microphone to the MIC (PLUG IN POWER) jack. You can attach the microphone to your clothes. **D**
To record from the radio:
 Tune in to the station you want to record (see "Listening to the Radio").

- 4 Press ● REC. ◀▶ PLAY is pressed simultaneously and recording starts. The recording level is automatically adjusted.

If you have started recording from the FWD side, recording will switch to the REV side automatically when that side of the tape reaches the end.

To	Press/switch
Pause a recording	PAUSE
Stop recording	■ STOP
Start recording during playback	● REC during playback
Review the portion just recorded	Press and hold REW/REVIEW during recording. Release to listen.

To reduce noise while recording AM programs

Set the ISS (Interference Suppress Switch) to the position that reduces noise the most.

Notes on recording

- The recording level is fixed.
- Adjusting the volume or setting AVLS will not affect the recording level. These controls only change the sound level you hear.
- Actual recording will start about 2 seconds after you press ● REC. Press ● REC about 2 seconds before the moment you want to start recording, or you will miss the beginning of your recording.
- When recording on both sides, recording will not be made for about 10 seconds while the tape is switching sides.

- Do not use a high-position (TYPE II) or metal (TYPE IV) tape. If you do, the sound may be distorted when you play back the tape, or the previous recording may not be erased completely.
- Do not connect or disconnect the headphones/earphones to/from the ☎ jack while recording from the radio. The recording condition may change abruptly, or noise may be recorded.
- When recording with the microphone, do not place it near a lamp cord or a fluorescent lamp as this may cause interference noise.
- No other operation can be done while recording. For other operations, stop recording first.
- DIR will not work while recording. Do not force changing the setting, as the unit may malfunction.
- The frequency will change if you switch TUNING MODE while recording the radio.

To prevent a tape from being accidentally recorded over

Break off the tabs from side A and/or B. To reuse the tape for recording, cover the tab hole with adhesive tape.

Playing a Tape

- 1 Insert a normal (TYPE I) tape. **C**
- 2 Press OFF to turn off the radio.
- 3 Set REC TIME to the same position as that used for recording. (To playback commercially sold tapes, select NORMAL.)
- 4 Press ◀▶ PLAY.

To	Press/switch
Stop playback	■ STOP
Pause playback	PAUSE
Fast-forward or rewind*	FF/CUE or REW/REVIEW during stop
Fast-forward/rewind while monitoring the sound	FF/CUE or REW/REVIEW during playback
Switch playback to the other side**	DIR to FWD or REV

* If you leave the unit after the tape has been wound or rewound, the batteries will be consumed rapidly. Be sure to press ■ STOP.

** Playback will switch automatically to the REV side when the FWD side of the tape reaches the end.

Note

- Do not open the cassette holder while the tape is running.

To use the speakers

Slide SPEAKER to ON. The sound will play from the speakers and no sound is heard from the headphones/earphones. When the speakers are in use, the AVLS function will not operate.

Other functions

Protecting Your Hearing —AVLS (Automatic Volume Limiter System) (Only when using headphones/earphones)

Set AVLS to LIMIT. The maximum volume is kept down to protect your ears.

中文

准备工作

安装电池 **A**

滑开电池盒盖，然后对正确极性装入两个 R6 (AA, 5 号) 电池。

"□" 在显示屏中闪烁时，即请更换电池。 **B**

注

- 为获得最佳效果，建议您使用 Sony 牌碱电池。
- 一定要在 2 分钟内换装好两个电池。否则，预约电台都将被解除掉。

录音

注

- 如果防误抹小翼已被折断，则无法在该面录音。
- 把 REC TIME 切换到 DOUBLE 位置所录的录音带是不能在不带该录音模式功能的磁带录音机上面播放妥当的。
- 录音时，请使用新的电池。
- 当用麦克风录音时，所录的声音是不能通过扬声器和头戴耳机 / 耳机听到的。

- 1 插入一盒标准型 (TYPE I) 录音带。 **C**
要在两面录音时：
 将要先录音的面作为 FWD 面插入盒带并把 DIR 设定于 FWD。
只要录一面时：
 将要录音的面作为 REV 面插入盒带并把 DIR 设定于 REV。

- 2 把 REC TIME 设定于所要位置。
NORMAL (4.8cm/s): 用于为获得最佳音响，最好请用正常模式进行录音。
DOUBLE (2.4cm/s): 用于双倍录音时间 (例如，使用 60 分盒带的双面可录 120 分钟)。适用于会议，口授记录等的录音。但，不适用于录音乐。

- 3 选择录音源。
要用内装麦克风录音时：
 把机器放在结实的面上 (例如桌面等) 让盒带座的一面朝上，使麦克风能有效地进行录音。
要用麦克风录音时：
 将附带的麦克风风连接到 MIC (PLUG IN POWER) 插孔。如图所示，您可以将麦克风夹在您的衣服上。 **D**
要从收音机录音时：
 请调入您想录音的电台 (参见“听收音机”)。

- 4 按 ● REC. ◀▶ PLAY 也同时被按下而开始录音。录音电平能自动调整

如果您是从 FWD (进绕) 面开始录音的，在录完 REV (倒绕) 面时，录音将自动转换到反面。

要	请按 / 切换
暂停录音	PAUSE
停止录音	■ STOP
播放中开始录音	播放中按 ● REC
检阅刚录的部分	录音中按住 REW/REVIEW。释放了按钮去听。

要在录 AM 节目时减小噪声

请将 ISS (干扰抑制开关) 设定于能将噪声减至最小的位置。

录音须知

- 录音电平被固定。
- 调整音量或设定 AVLS (自动音量限制系统) 都不会影响到录音电平。这些控制器只能改变听觉声音的水平。
- 实际录音将在您滑动 ● REC 约 2 秒钟之后开始。请在您要开始录音时刻的约 2 秒钟之前滑动 ● REC，否则您将错过录音的开始部分。
- 在两面录音时，在录音带换面过程中，录音将有约 10 秒钟不进行。

- 请勿用高位 (TYPE II) 或金属 (TYPE IV) 型的录音带录音。否则播放录音带时声音可能会失真，以前的录音内容也可能不会被完全抹消。
- 从收音机录音时，请勿将头戴耳机 / 耳机接到 / 拔出 ☎ 插孔。否则录音条件可能会突然改变，也可能录下噪音。
- 用麦克风录音时，请勿将麦克风靠近电灯线或日光灯，以避免噪音干扰。
- 在录音时所有其他操作都无法进行。要进行其他操作，请先停止录音。
- 录音中，DIR 功能是不起作用的。请不要强制设定。否则机器可能会故障。
- 录收音机节目当中，您如果切换了 TUNING MODE，频率即将起变化。

要防止录音带被误录时

请折断 A 面和 / 或 B 面的防误抹小翼。要重新用该录音带录音，用胶带盖住折断防误抹小翼后的缺口。

播放录音带

- 1 插入一盒标准型 (TYPE I) 录音带。 **C**
- 2 按 OFF 以关掉收音机。
- 3 把 REC TIME 设定于和录音所用的相同位置。(要播放市售的磁带时，请选择 NORMAL。)
- 4 按 ◀▶ PLAY。

要	请按 / 切换
停止播放	按 ■ STOP
暂停播放	PAUSE
快进绕或重绕*	停止中按 FF/CUE 或 REW/REVIEW
监听着声音快进绕 / 重绕	播放中按 FF/CUE 或 REW/REVIEW
换播放另一面**	把 DIR 切换为 FWD 或 REV

* 当磁带已绕完或重绕完时，如果仍放置机器不管，将迅速消耗电池。请即按 ■ STOP。

** 当磁带绕到 FWD (进绕) 面的终端时，播放将自动地切换到 REV (倒绕) 面。

注

- 在磁带运转中，不可打开盒带座。

要用扬声器时

把 SPEAKER 滑到 ON。声音将从扬声器放出而头戴耳机 / 耳机则听不到声音。当使用扬声器时，AVLS 功能是不起作用的。

其他功能

保护听觉

- AVLS (自动音量限制系统) (当使用头戴耳机 / 耳机时为限)

把 AVLS 设定于 LIMIT。便可限制最大的音量以保护您的耳朵。

(接反面)

