

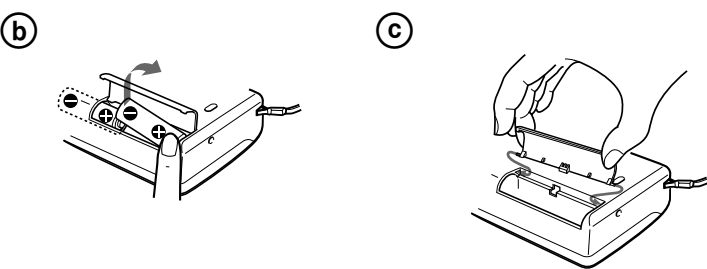
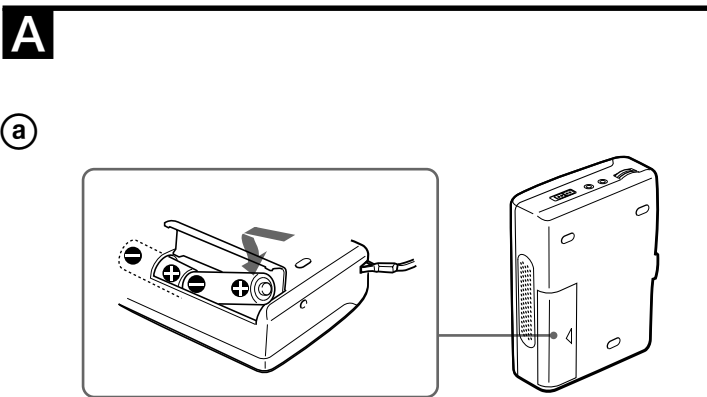
# Cassette-Corder

Operating Instructions

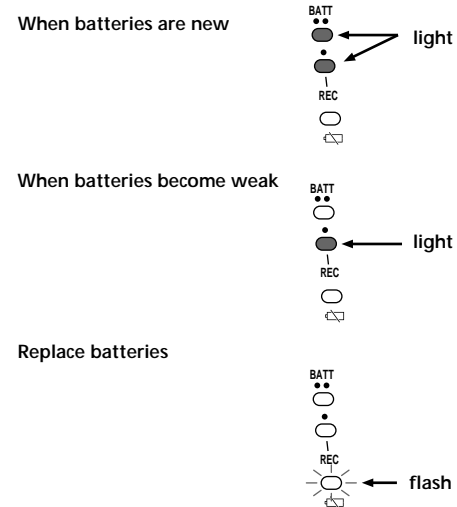
TCM-40DV

Sony Corporation © 1999

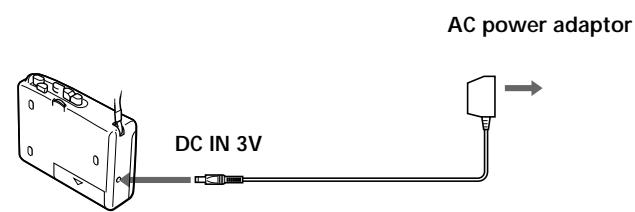
Sony online <http://www.world.sony.com/>



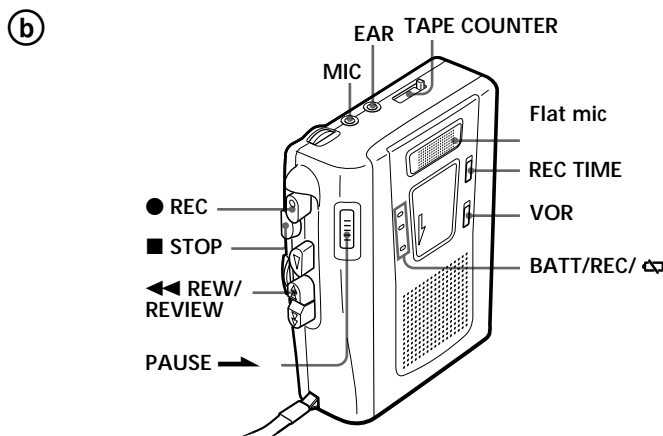
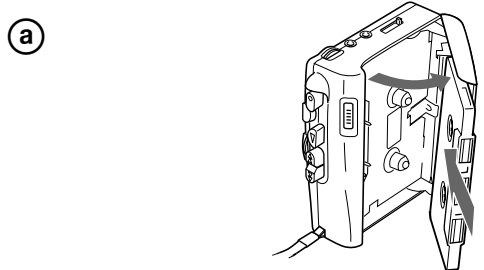
d



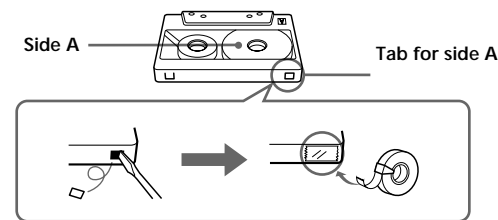
e



B



C



## Welcome !

Thank you for purchasing the Sony Cassette-Corder. This Cassette-Corder is equipped with a REC TIME switch that lets you record double the normal length on any cassette.

### Note

Tapes recorded with the REC TIME switch in the DOUBLE position cannot be played properly by a tape recorder without the REC TIME switch function.

## ▶ Getting Started

### Preparing a Power Source

Choose one of the following power sources.

#### Dry Batteries (see Fig. A-①)

Make sure that nothing is connected to the DC IN 3V jack.

- 1 Open the battery compartment lid.
- 2 Insert two size R6 (AA) batteries with correct polarity and close the lid.

### Notes

- Do not charge a dry battery.
- Do not use a new battery with an old one.
- Do not use different types of batteries.
- When you do not use the unit for a long time, remove the batteries to avoid any damage caused by battery leakage and subsequent corrosion.
- Dry batteries will not be expended when another power source is connected.

#### To take out the batteries (see Fig. A-②)

#### To attach the battery compartment lid if it is accidentally detached (see Fig. A-③)

#### When to replace the batteries (see Fig. A-④)

Replace the batteries with new ones when the BATT/REC lamps go off and the lamp flashes. The BATT/REC lamps change as illustrated.

### Notes

- During FF(CUE) or REW(REVIEW), the lamp may flash. Only when the tape does not run properly, replace the batteries.
- After the batteries have been used for a while, the BATT/REC lamps may flicker during playback if the volume is turned up. This is, however, not an indication for the batteries to be replaced.
- The unit will play back normally for a while even after the lamp flashes. You should, nonetheless, replace the batteries as soon as possible. Otherwise, the built-in speaker may emit a loud noise and recordings may not be made correctly.
- The lamp may flash momentarily at beginning of playback or the end of the tape. If the flashing stops right away, you do not need to replace the batteries.

#### Battery life (Approx. hours) (EIAJ\*)

	Sony alkaline LR6 (SG)	Sony R6P (SR)
Playback	11	3
Recording	11	3

\* Measured value by the standard of EIAJ (Electronic Industries Association of Japan). (Using a Sony HF series cassette tape)

### Note

The battery life may shorten depending on the operation of the unit.

For maximum performance we recommend that you use alkaline batteries.

#### House Current (see Fig. A-⑤)

Connect the AC power adaptor to DC IN 3V and to a wall outlet. Use the AC-E30HG AC power adaptor (not supplied). Do not use any other AC power adaptor.



### Note

Specifications for AC-E30HG vary for each area. Check your local voltage and the shape of the plug before purchasing.

## ▶ Operating the Unit

### Recording (see Fig. B-①, ②)

You can record right away with the built-in microphone. Make sure that nothing is connected to the MIC jack. Place the unit on a hard surface such as a desk with the cassette holder side up so that the flat mic can record effectively.

- 1 Press the counter reset button to reset the tape counter.
- 2 Insert a normal (TYPE I) tape with the side to be recorded facing the cassette holder.
- 3 Set REC TIME to the desired mode.
  - NORMAL (4.8cm/s): for optimum sound.
  - DOUBLE (2.4cm/s): for double recording time (for example, 120 minutes using both sides of a 60-minute cassette). Suitable for recording conferences, dictations, etc. Not recommended to record music.
- 4 Set VOR to: H or L to start and pause recording automatically to the sound.
  - H (high) to record at meetings or in a quiet and/or spacious place.
  - L (low) to record for dictation or in a noisy place.
 Set VOR to OFF to start and stop recording manually.

### Note

When the sound to be recorded is not loud enough, set the VOR switch to OFF, or the unit may not start recording.

- 5 Press ● REC.
  - ▶ PLAY is pressed simultaneously and recording starts.
 While the tape runs, the BATT/REC lamp lights and flickers depending on the strength of the sound.

At the end of the tape, recording stops and the unit turns off automatically.

To	Press or slide
Stop recording	■ STOP
Pause recording	PAUSE → in the direction of the arrow To release pause recording, release PAUSE →*.
Review the portion just recorded	Press and hold ◀◀ REW/REVIEW during recording. Release the button at the point to start.
Take out a cassette	Press ■ STOP and open the cassette compartment lid by hand.

\* PAUSE → will also be automatically released when ■ STOP is pressed (stop-pause-release function).

#### To monitor the sound

Connect an earphone (not supplied) firmly to the EAR jack. You cannot adjust the monitoring volume.

### Notes

- Do not use a Hi-position (TYPE II) or metal (TYPE IV) tape. If you do, the sound may be distorted when you play back the tape, or the previous recording may not be erased completely.
- The SPEED CONTROL switch works in the playback mode only. Recording will be made independent of this control.

#### Notes on VOR (Voice Operated Recording)

- When you use the VOR system in a noisy place, the unit will stay in the recording mode. If the sound is too soft, on the contrary, the unit will not start recording. Set VOR to H (high) or L (low) depending on the conditions to pick up necessary sound only.
- The VOR system depends on the environmental conditions. If you cannot get the desired results even after adjusting VOR to H or L, set VOR to OFF.

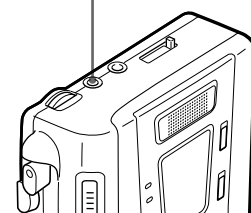
#### To prevent a tape from being accidentally recorded over (see Fig. B-③)

Break off and remove the cassette tabs. To reuse the tape for recording, cover the tab hole with adhesive tape.

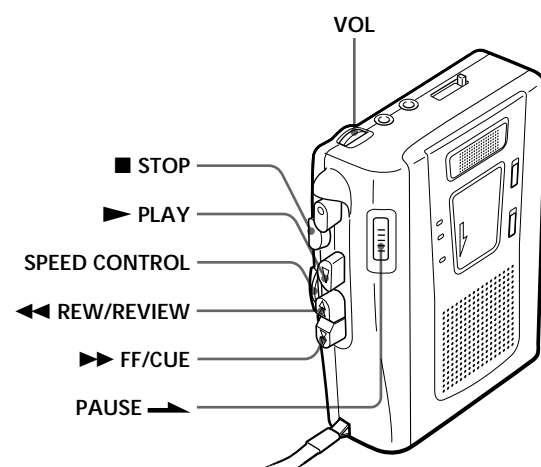
(turn over)

C

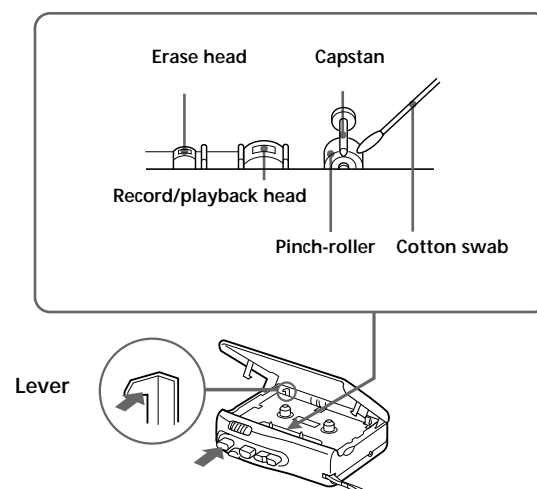
MIC (PLUG IN POWER)



D



E



## Recording from Various Sound Sources (see Fig. C)

### Recording with an External Microphone

Connect a microphone to the MIC jack. The MIC jack is distinguished from the earphone jack by a raised dot. Use a microphone of low impedance (less than 3 kilohms) such as ECM-T115 (not supplied). When using a plug-in-power system microphone, the power to the microphone is supplied from this unit.

#### Note

When recording with an external microphone, the VOR system may not work properly due to difference in sensitivity.

### Recording from Another Equipment

Connect another equipment to the MIC jack using the RK-G64HG connecting cord (not supplied).

### Playing a Tape (see Fig. D)

- 1 Insert a cassette with the side to be played facing the cassette holder.
- 2 Set REC TIME to the same position as that used for recording. To playback commercially sold tapes, select NORMAL.
- 3 Press ► PLAY and then adjust the volume. There is a raised dot beside VOL to show the direction to turn down volume.
- 4 Adjust the tape playback speed. Turn SPEED CONTROL to: SLOW (slow) to play back at a slower speed. Center position to play back at normal speed. FAST (fast) to play back at a faster speed.

At the end of the tape, playback stops and the unit turns off automatically.

To	Press or slide
Stop playback/stop fast forward or rewind	■ STOP
Pause playback	PAUSE ► in the direction of the arrow To release pause playback, release PAUSE ►*.
Search forward during playback (CUE)	Press and hold ►► FF/CUE and release it at the point you want
Search backward during playback (REVIEW)	Press and hold ◄◄ REW/REVIEW and release it at the point you want
Fast forward**	►► FF/CUE during stop
Rewind**	◄◄ REW/REVIEW during stop
Start recording during playback	● REC
Take out a cassette	Press ■ STOP and open the cassette compartment lid by hand.

\* PAUSE ► will also be automatically released when ■ STOP is pressed (stop-pause-release function).

\*\* If you leave the unit after the tape has been wound or rewound, the batteries will be consumed rapidly. Be sure to depress ■ STOP.

### ► Additional Information

#### Precautions

##### On power

- Operate the unit only on 3 V DC. For AC operation, use the AC power adaptor recommended for the unit. Do not use any other type. For battery operation, use two size R6 (AA) batteries.

##### On the unit

- Do not leave the unit in a location near heat sources, or in a place subject to direct sunlight, excessive dust or mechanical shock.
- Should any solid object or liquid fall into the unit, remove the batteries or disconnect the AC power adaptor, and have the unit checked by qualified personnel before operating it any further.
- Keep personal credit cards using magnetic coding or spring-wound watches etc. away from the unit to prevent possible damage from the magnet used for the speaker.
- If the unit has not been used for a long time, set it in the playback mode to warm it up for a few minutes before inserting a tape.

##### On tapes longer than 90 minutes

We do not recommend the use of tapes longer than 90 minutes except for a long continuous recording or playback. They are very thin and tend to be stretched easily.

If you have any questions or problems concerning your unit, please consult your nearest Sony dealer.

## Maintenance (see Fig. E)

### To clean the tape heads and path

Depress ● REC while pushing the lever.

Wipe the heads, pinch roller, and the capstan with a cotton swab moistened with alcohol after every 10 hours of use.

### To clean the exterior

Use a soft cloth slightly moistened in water. Do not use alcohol, benzine or thinner.

## Troubleshooting

Should any problem persist after you have made these checks, consult your nearest Sony dealer.

#### You cannot press ● REC.

- The tab on the tape has been removed.

#### You cannot press ► PLAY.

- The tape has reached the end. Rewind the tape.

#### The unit does not operate.

- The batteries have been inserted with incorrect polarity.
- The batteries are weak.
- PAUSE ► is slid in the direction of the arrow.
- The AC power adaptor is not firmly connected.
- When trying to run on dry batteries, the AC power adaptor has been left plugged in to the DC IN 3V jack, but not to the power source.

#### No sound comes from the speaker.

- The earphone is plugged in.
- The volume is turned down completely.

#### Tape speed is too fast or too slow in the playback mode.

- Improper setting of the REC TIME switch. Set it to the same speed as that used for recording.
- SPEED CONTROL is set at a point other than the center.

#### The sound drops out or comes with excessive noise.

- The volume is turned down completely.
- The batteries are weak.
- The heads are contaminated. See "Maintenance."

#### Recording cannot be made.

- Connection is made incorrectly.
- The batteries are weak.
- The record/playback head is contaminated.
- VOR has been set to the improper position when VOR function works.

#### Recording is interrupted.

- VOR is set to H or L. When you do not use VOR, set it to OFF.

Recording cannot be erased completely.

- The erase head is contaminated.
- You are using a Hi-position (TYPE II) or metal (TYPE IV) tape.

## Specifications

#### Recording system

2-track 1 channel monaural

#### Tape speed

4.8 cm/s or 2.4 cm/s

#### Frequency range

250 - 6,300 Hz using normal (TYPE I) cassette (with REC TIME switch at "NORMAL")

#### Speaker

Approx. 3.6 cm (1 7/16 in.) dia.

#### Power output

250 mW (at 10 % harmonic distortion)

#### Input

Microphone input jack (minijack) sensitivity 0.2 mV for 3 kilohms or lower impedance microphone

#### Output

Earphone jack (minijack) for 8 - 300 ohms earphone

#### Variable range of the tape speed

From approx. +30% to -15% (with REC TIME switch at "NORMAL")

#### Power requirements

3 V DC batteries R6 (AA) x 2/  
External DC 3 V power sources

#### Dimensions (w/h/d) (incl. projecting parts and controls)

Approx. 116 x 91 x 38mm  
(4 5/8 x 3 5/8 x 1 1/2 in.)

#### Mass

Approx. 195 g (6.9 oz.)

Design and specifications are subject to change without notice.