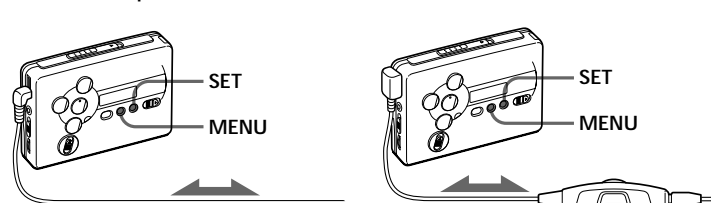
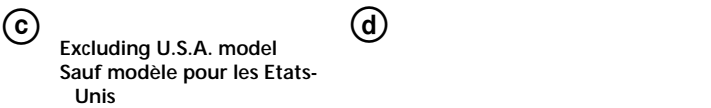


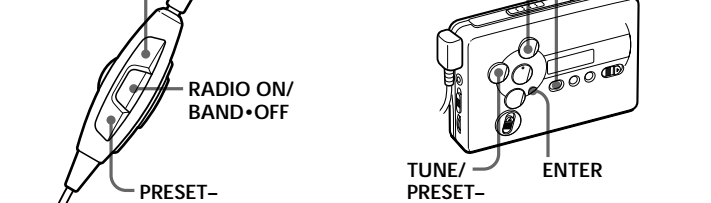
(a) U.S.A. model
Modèle pour les Etats-Unis



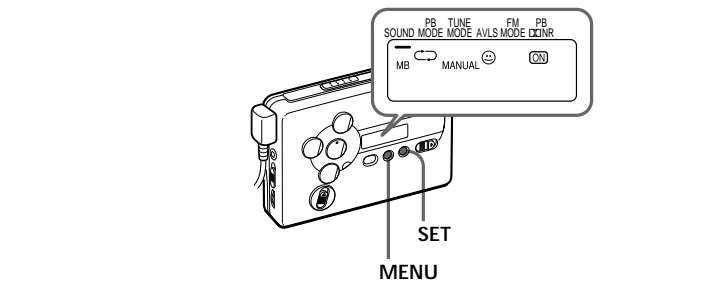
(b) Other models
Autres modèles



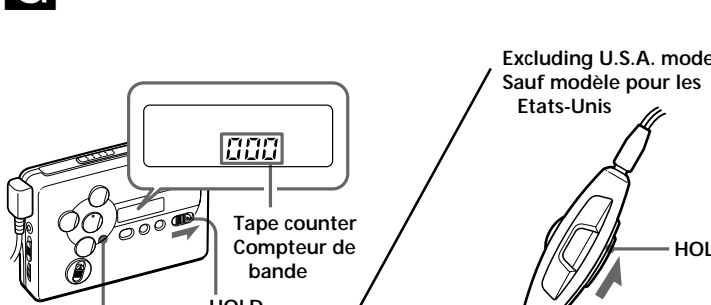
(c) Excluding U.S.A. model
Sauf modèle pour les Etats-Unis



(d) Excluding U.S.A. model
Sauf modèle pour les Etats-Unis



(f) Excluding U.S.A. model
Sauf modèle pour les Etats-Unis



(g) Excluding U.S.A. model
Sauf modèle pour les Etats-Unis

Listening to the Radio (see Fig. E-①)

1 Press BAND • RADIO ON to turn on the radio.

2 Press BAND • RADIO ON repeatedly to select AM, FM1, or FM2.

3 Press MENU on the main unit repeatedly and set " " (the cursor) in the display to TUNE MODE.

4 For manual tuning

① Press SET to choose MANUAL.

② Press TUNE/PRESET + or - repeatedly to tune in to the desired station.

Keep pressing TUNE/PRESET + or - to scan for stations.

For preset tuning

① Press SET to choose PRESET.

② Press TUNE/PRESET + or - repeatedly to recall the desired preset station.

To use preset tuning, preset stations first (see "Presetting Radio Stations").

To turn off the radio Press ■•RADIO OFF.

To improve the broadcast reception

• For AM: The Walkman has a built-in antenna. Reorient the Walkman horizontally to obtain optimum AM reception.

• For FM (see Fig. E-②): Extend the headphones cord, the aerial (U.S.A. model only). Extend the cord of the remote control, the aerial (excluding U.S.A. model).

If the reception is still not good, press MENU repeatedly to set the cursor in the display to FM MODE. Then press SET to choose from "MONO" (monaural), "LOCAL" or none (stereo) for best reception.

To operate from the remote control (excluding U.S.A. model) (see Fig. E-③)

To turn on the radio, press RADIO ON/BAND•OFF for more than one second (while the tape is in stop mode only).

To tune in or recall a preset station, press PRESET+ or -.

To turn off the radio, press RADIO ON/BAND•OFF.

To cancel the stored station Follow the procedure above and in step 4, instead of tuning in to a station, press and hold TUNE/PRESET + or - until "----" is displayed. Press ENTER while "----" is flashing. The preset number will flash in the display. Press TUNE/PRESET + or - repeatedly to select the preset number you want to cancel and press ENTER.

Presetting Radio Stations (see Fig. E-④)

Once you store your favorite stations in memory, you can play them easily. You can preset up to 32 stations—12 each for FM1 and FM2 and 8 for AM (for the JpN area), up to 16 stations—8 each for FM and AM.

* See "Receiving Stations Outside Your Country" (Excluding European, Saudi Arabian, and Chinese model).

1 Press BAND • RADIO ON to turn on the radio.

2 Press ENTER. The frequency digits will flash in the display.

3 Press and hold BAND • RADIO ON until "Eur", "JpN", or "USA" flashes.

Tuning in to and Storing Radio Stations Automatically (Auto-Memory Scanning function)

1 Press BAND • RADIO ON to turn on the radio.

2 Press BAND • RADIO ON repeatedly to select AM, FM1, or FM2.

3 Press ENTER until "A" appears in the display. The Walkman starts searching and storing stations. Then the preset number appears.

4 For manual tuning

① Press SET to choose MANUAL.

② Press TUNE/PRESET + or - repeatedly to tune in to the desired station.

Keep pressing TUNE/PRESET + or - to scan for stations.

For preset tuning

① Press SET to choose PRESET.

② Press TUNE/PRESET + or - repeatedly to recall the desired preset station.

To use preset tuning, preset stations first (see "Presetting Radio Stations").

To turn off the radio Press ■•RADIO OFF.

To improve the broadcast reception

• For AM: The Walkman has a built-in antenna. Reorient the Walkman horizontally to obtain optimum AM reception.

• For FM (see Fig. E-②): Extend the headphones cord, the aerial (U.S.A. model only). Extend the cord of the remote control, the aerial (excluding U.S.A. model).

If the reception is still not good, press MENU repeatedly to set the cursor in the display to FM MODE. Then press SET to choose from "MONO" (monaural), "LOCAL" or none (stereo) for best reception.

To operate from the remote control (excluding U.S.A. model) (see Fig. E-③)

To turn on the radio, press RADIO ON/BAND•OFF for more than one second (while the tape is in stop mode only).

To tune in or recall a preset station, press PRESET+ or -.

To turn off the radio, press RADIO ON/BAND•OFF.

To cancel the stored station Follow the procedure above and in step 4, instead of tuning in to a station, press and hold TUNE/PRESET + or - until "----" is displayed. Press ENTER while "----" is flashing. The preset number will flash in the display. Press TUNE/PRESET + or - repeatedly to select the preset number you want to cancel and press ENTER.

To improve the broadcast reception

• For AM: The Walkman has a built-in antenna. Reorient the Walkman horizontally to obtain optimum AM reception.

• For FM (see Fig. E-②): Extend the headphones cord, the aerial (U.S.A. model only). Extend the cord of the remote control, the aerial (excluding U.S.A. model).

If the reception is still not good, press MENU repeatedly to set the cursor in the display to FM MODE. Then press SET to choose from "MONO" (monaural), "LOCAL" or none (stereo) for best reception.

To operate from the remote control (excluding U.S.A. model) (see Fig. E-③)

To turn on the radio, press RADIO ON/BAND•OFF for more than one second (while the tape is in stop mode only).

Receiving Stations Outside Your Country (Excluding European, Saudi Arabian, and Chinese model) (see Fig. E-⑤)

1 Press BAND • RADIO ON to turn on the radio.

2 Press ENTER. The frequency digits will flash in the display.

3 Press and hold BAND • RADIO ON until "Eur", "JpN", or "USA" flashes.

4 Press MENU repeatedly to set the cursor in the display to FM MODE. Then press SET to choose from "MONO" (monaural), "LOCAL" or none (stereo) for best reception.

To operate from the remote control (excluding U.S.A. model) (see Fig. E-③)

To turn on the radio, press RADIO ON/BAND•OFF for more than one second (while the tape is in stop mode only).

To tune in or recall a preset station, press PRESET+ or -.

To turn off the radio, press RADIO ON/BAND•OFF.

To cancel the stored station Follow the procedure above and in step 4, instead of tuning in to a station, press and hold TUNE/PRESET + or - until "----" is displayed. Press ENTER while "----" is flashing. The preset number will flash in the display. Press TUNE/PRESET + or - repeatedly to select the preset number you want to cancel and press ENTER.

To improve the broadcast reception

• For AM: The Walkman has a built-in antenna. Reorient the Walkman horizontally to obtain optimum AM reception.

• For FM (see Fig. E-②): Extend the headphones cord, the aerial (U.S.A. model only). Extend the cord of the remote control, the aerial (excluding U.S.A. model).

If the reception is still not good, press MENU repeatedly to set the cursor in the display to FM MODE. Then press SET to choose from "MONO" (monaural), "LOCAL" or none (stereo) for best reception.

To operate from the remote control (excluding U.S.A. model) (see Fig. E-③)

To turn on the radio, press RADIO ON/BAND•OFF for more than one second (while the tape is in stop mode only).

To tune in or recall a preset station, press PRESET+ or -.

To turn off the radio, press RADIO ON/BAND•OFF.

To cancel the stored station Follow the procedure above and in step 4, instead of tuning in to a station, press and hold TUNE/PRESET + or - until "----" is displayed. Press ENTER while "----" is flashing. The preset number will flash in the display. Press TUNE/PRESET + or - repeatedly to select the preset number you want to cancel and press ENTER.

To improve the broadcast reception

• For AM: The Walkman has a built-in antenna. Reorient the Walkman horizontally to obtain optimum AM reception.

• For FM (see Fig. E-②): Extend the headphones cord, the aerial (U.S.A. model only). Extend the cord of the remote control, the aerial (excluding U.S.A. model).

If the reception is still not good, press MENU repeatedly to set the cursor in the display to FM MODE. Then press SET to choose from "MONO" (monaural), "LOCAL" or none (stereo) for best reception.

To operate from the remote control (excluding U.S.A. model) (see Fig. E-③)

To turn on the radio, press RADIO ON/BAND•OFF for more than one second (while the tape is in stop mode only).

To tune in or recall a preset station, press PRESET+ or -.

To turn off the radio, press RADIO ON/BAND•OFF.

To cancel the stored station Follow the procedure above and in step 4, instead of tuning in to a station, press and hold TUNE/PRESET + or - until "----" is displayed. Press ENTER while "----" is flashing. The preset number will flash in the display. Press TUNE/PRESET + or - repeatedly to select the preset number you want to cancel and press ENTER.

Protecting Your Hearing (AVLS)

When you set the AVLS (Automatic Volume Limiter System) function to active, the maximum volume is kept down to protect your ears.

1 Press MENU repeatedly in the playback, stop or radio mode to set the cursor to AVLS in the display. Then press SET to show " ".

2 Press SET so that " " disappears.

3 Press SET so that " " disappears.

4 Press SET so that " " disappears.

5 Press SET so that " " disappears.

6 Press SET so that " " disappears.

7 Press SET so that " " disappears.

8 Press SET so that " " disappears.

9 Press SET so that " " disappears.

10 Press SET so that " " disappears.

11 Press SET so that " " disappears.

12 Press SET so that " " disappears.

13 Press SET so that " " disappears.

14 Press SET so that " " disappears.

15 Press SET so that " " disappears.

16 Press SET so that " " disappears.

17 Press SET so that " " disappears.

18 Press SET so that " " disappears.

19 Press SET so that " " disappears.

20 Press SET so that " " disappears.

21 Press SET so that " " disappears.

22 Press SET so that " " disappears.

23 Press SET so that " " disappears.

24 Press SET so that " " disappears.

25 Press SET so that " " disappears.

26 Press SET so that " " disappears.

27 Press SET so that " " disappears.

28 Press SET so that " " disappears.

29 Press SET so that " " disappears.

30 Press SET so that " " disappears.

31 Press SET so that " " disappears.

32 Press SET so that " " disappears.

33 Press SET so that " " disappears.

34 Press SET so that " " disappears.

35 Press SET so that " " disappears.

36 Press SET so that " " disappears.

37 Press SET so that " " disappears.

38 Press SET so that " " disappears.

39 Press SET so that " " disappears.

40 Press SET so that " " disappears.

41 Press SET so that " " disappears.

42 Press SET so that " " disappears.

43 Press SET so that " " disappears.

44 Press SET so that " " disappears.

45 Press SET so that " " disappears.

46 Press SET so that " " disappears.

47 Press SET so that " " disappears.

48 Press SET so that " " disappears.

49 Press SET so that " " disappears.

50 Press SET so that " " disappears.

51 Press SET so that " " disappears.

52 Press SET so that " " disappears.

53 Press SET so that " " disappears.

54 Press SET so that " " disappears.

55 Press SET so that " " disappears.

56 Press SET so that " " disappears.

57 Press SET so that " " disappears.

58 Press SET so that " " disappears.

59 Press SET so that " " disappears.

60 Press SET so that " " disappears.

61 Press SET so that " " disappears.

62 Press SET so that " " disappears.

63 Press SET so that " " disappears.

64 Press SET so that " " disappears.

65 Press SET so that " " disappears.

66 Press SET so that " " disappears.

67 Press SET so that " " disappears.

68 Press SET so that " " disappears.

69 Press SET so that " " disappears.

70 Press SET so that " " disappears.

71 Press SET so that " " disappears.

72 Press SET so that " " disappears.

73 Press SET so that " " disappears.

74 Press SET so that " " disappears.

75 Press SET so that " " disappears.

76 Press SET so that " " disappears.

77 Press SET so that " " disappears.

78 Press SET so that " " disappears.

79 Press SET so that " " disappears.

80 Press SET so that " " disappears.

81 Press SET so that " " disappears.

82 Press SET so that " " disappears.

83 Press SET so that " " disappears.

84 Press SET so that " " disappears.

85 Press SET so that " " disappears.

86 Press SET so that " " disappears.

87 Press SET so that " " disappears.

88 Press SET so that " " disappears.

89 Press SET so that " " disappears.

90 Press SET so that " " disappears.

91 Press SET so that " " disappears.

92 Press SET so that " " disappears.

93 Press SET so that " " disappears.

94 Press SET so that " " disappears.

95 Press SET so that " " disappears.

96 Press SET so that " " disappears.

97 Press SET so that " " disappears.

98 Press SET so that " " disappears.

99 Press SET so that " " disappears.

100 Press SET so that " " disappears.

101 Press SET so that " " disappears.

102 Press SET so that " " disappears.

103 Press SET so that " " disappears.

104 Press SET so that " " disappears.

105 Press SET so that " " disappears.

106 Press SET so that " " disappears.

107 Press SET so that " " disappears.

108 Press SET so that " " disappears.

109 Press SET so that " " disappears.

110 Press SET so that " " disappears.

111 Press SET so that " " disappears.

112 Press SET so that " " disappears.

113 Press SET so that " " disappears.

114 Press SET so that " " disappears.

115 Press SET so that " " disappears.

116 Press SET so that " " disappears.

117 Press SET so that " " disappears.

118 Press SET so that " " disappears.

119 Press SET so that " " disappears.

120 Press SET so that " " disappears.

121 Press SET so that " " disappears.

122 Press SET so that " " disappears.

123 Press SET so that " " disappears.

124 Press SET so that " " disappears.

125 Press SET so that " " disappears.

126 Press SET so that " " disappears.

127 Press SET so that " " disappears.

128 Press SET so that " " disappears.

129 Press SET so that " " disappears.

130 Press SET so that " " disappears.

131 Press SET so that " " disappears.

132 Press SET so that " " disappears.

133 Press SET so that " " disappears.