

Radio Cassette-Corder

Operating Instructions

WALKMAN

WALKMAN is a registered trademark of Sony Corporation.

WM-GX670

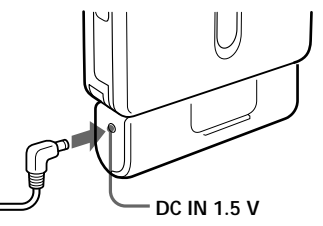
Sony Corporation © 1999 Printed in Japan Printed on recycled paper

Sony online http://www.world.sony.com/

WARNING

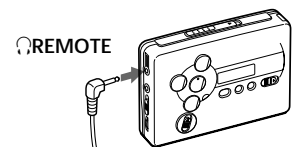
To prevent fire or shock hazard, do not expose the unit to rain or moisture.

D

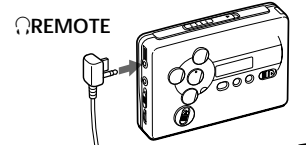


B

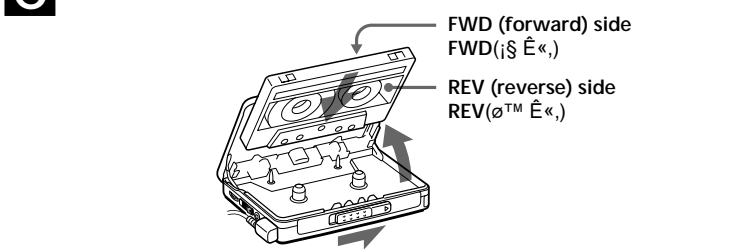
U.S.A. model
Ä± µ®



Other models
±, µ®



C

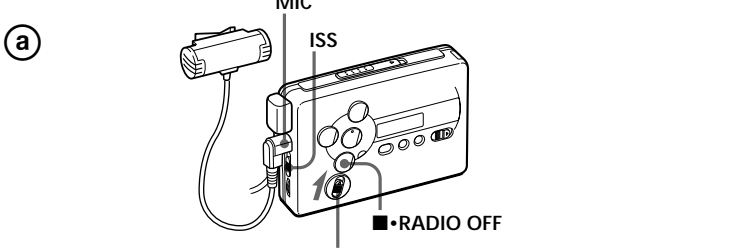


A

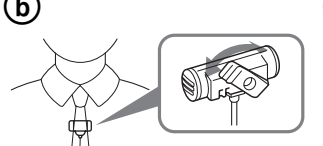
B

C

D

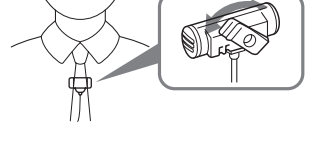


a



b

c



English

Getting Started

Choosing a Power Source

Dry Battery (see Fig. A-D)
Attach the supplied battery case, and then insert one R6 (size AA) battery with correct polarity.

Note

For maximum performance we recommend that you use a Sony alkaline battery.

Rechargeable Battery (see Fig. A-D)

- 1 Insert the supplied rechargeable battery (NC-6WM) into the charger with correct polarity.
2 Plug in the charger to the house current (mains). U.K., Australian, and Hong Kong model: Full charging takes about 3.5 hours. U.S.A., Canadian, European Continent, and Arabian model: Full charging takes about 2.5 hours. Korean model: The full charging time depends on the voltage of your mains. 110 V: 10 hours 220 V: 2.5 hours
Other models: The full charging time depends on the voltage of your mains. 120 V: 10 hours 220-240 V: 2.5 hours
If the plug does not fit to your mains, attach the supplied AC plug adaptor (Excluding Chinese model).
3 Insert the fully charged battery into the rechargeable battery compartment (see Fig. A-D).

You can charge the battery about 300 times.

When to replace/charge the battery

Replace or charge the battery when " " flashes in the display. The battery remainder mark has 3 steps to show the remaining battery power.

Table with 2 columns: Display, Condition. Shows battery level indicators and their corresponding conditions.

Notes

- When you insert a charged battery, the battery remainder mark may show " " even if it is not fully charged.
The battery remainder mark may temporarily show a lower level during fast forwarding or rewinding or use in extremely low temperatures.

Table with 2 columns: Battery life (Approx. hours) (EIAJ*), Sony alkaline LR6 (SG), Tape playback, Radio reception, MIC recording, Radio recording.

Notes

When the cassette holder is opened, the direction of the tape will be automatically set to "FWD".

Table with 2 columns: Rechargeable battery (NC-6WM), Tape playback, Radio reception, MIC recording, Radio recording.

Table with 2 columns: Sony alkaline LR6 (SG) and Rechargeable NC-6WM, Tape playback, Radio reception, MIC recording, Radio recording.

Note
Measured value by the standard of EIAJ (Electronic Industries Association of Japan). (Using a Sony HF series cassette tape)

Note

The battery life may shorten depending on the operation of the unit.

House Current (see Fig. A-D)

Remove the rechargeable battery if inserted. Attach the battery case and connect the AC power adaptor AC-E15HG (not supplied) to the DC IN 1.5 V jack of the battery case and to the wall outlet. Do not use any other AC power adaptor. Specifications for AC-E15HG vary for each area. Check your local voltage and the polarity of the plug before purchasing.



Connecting the Headphones/Earphones (see Fig. B)

- 1 Connect the stereo mini plug firmly to the remote control (excluding U.S.A. model).
2 Connect the headphones/earphones to REMOTE.
3 Wear the "L" marked side to the left ear and the "R" marked side to the right ear. If the earphones do not fit to your ears or the sound is unbalanced, adjust the earphones to fit to your ears firmly.

Operating the Walkman

Playing a Tape (see Fig. C)

- 1 Open the cassette holder and insert a cassette.
2 Make sure the HOLD function is turned off. If it is on, slide the HOLD switch to turn it off.
3 Press REPEAT on the main unit, or if using the remote control (excluding U.S.A. model), press (play) (stop). Adjust the volume with VOL.

When adjusting the volume on the main unit (excluding U.S.A. model) Set the VOL control on the remote control at maximum.

When adjusting the volume on the remote control (excluding U.S.A. model) Set the VOL control on the main unit to around 6.

Note on the cassette holder When opening the cassette holder on the main unit, make sure the tape is stopped, then slide the OPEN switch. If the cassette holder is opened when the tape is running, the tape may loosen and be damaged.

Operation on the main unit

Table with 2 columns: To, Press. Lists controls for playing other side, stop playback, fast forward, and rewind.

Operation on the remote control (excluding U.S.A. model)

Table with 2 columns: To, Press. Lists controls for playing other side, stop playback, fast forward, and rewind on the remote control.

Notes
You cannot specify a repeat portion to include both sides of the tape.
You cannot specify a repeat portion of shorter than 2 seconds.
After repeated operation, the actual portion that is played back may shift off somewhat from the exact portion specified with the tags due to tape slack.

Other tape operations
On the remote control, press FF or REV (excluding U.S.A. model).

Recording (see Fig. D-D)

You can record radio programs from the built-in radio, or record with the supplied microphone. In either case, use a new or fully charged battery.

Note
If the record-protect tab is broken, you cannot record on that side.

- 1 Insert a normal (TYPE I) tape. To record on both sides Insert the cassette with the side to be first recorded on as the FWD (forward) side.
2 To record on one side only Insert the cassette with the side to be recorded on as the REV (reverse) side.
3 Make sure that "REV" is displayed. If not, press and hold RADIO OFF until "REV" changes to "FWD".

Note on AMS
The AMS function detects a blank of 4 seconds or longer between the tracks. If there is noise between the tracks, AMS may not recognize the blank and may not operate. Likewise, if there is a low-level segment within a track, AMS may recognize it as a blank space.

Note
When the cassette holder is opened, the direction of the tape will be automatically set to "FWD".

A-B Repeat
A-B Repeat plays back repeatedly any portion of the tape you specified. Specify by tagging the beginning (point A) and the end (point B) of the portion during playback.

- 1 Press REPEAT for 2 seconds or more during playback to tag point A. "A" will flash in the display of the main unit.
2 Press REPEAT again to tag point B. "A-B" will flash and the tape will be rewound to point A. Then "REP" appears in the display and the specified portion is played repeatedly.

To stop recording

Press RADIO OFF (Excluding U.S.A. model) on the remote control, press (stop) to stop recording.

To reduce noise while recording AM programs

Set the ISS (Interference Suppress Switch) to the position that reduces noise the most.

To monitor the recording sound

You can monitor the recording sound through headphones/earphones. Adjust monitoring level using VOL.

Note
You may hear some noise in the monitor sound in the RV, MB, or GRV mode, but this does not affect recording.

Notes on recording
The recording level is fixed.
Sound emphasis (RV, MB, or GRV), AVLS and Dolby B NR settings do not affect recording.
Actual recording will start about 2 seconds after you slide REC. Slide REC about 2 seconds before the moment you want to start recording, or you will miss the beginning of your recording.

When recording on both sides, recording will not be made for about 10 seconds while the tape is switching sides.
Do not use a CrO2 (TYPE II) or metal (TYPE IV) tape. If you do, the sound may be distorted when you play back the tape, or the previous recording may not be erased completely.
Do not connect or disconnect the headphones/earphones to/from REMOTE while recording from the radio. The recording condition may change abruptly, or noise may be recorded.

To avoid noise interference, do not place it near a lamp cord or a fluorescent lamp when recording with the microphone.
If a howling effect occurs, turn down the volume.
All other operation cannot be made while recording. For other operation, stop recording first.

To prevent a tape from being accidentally recorded over (see Fig. D-D) Break off the tabs from side A and/or B. To reuse the tape for recording, cover the tab hole with adhesive tape.

Note
When the cassette holder is opened, the direction of the tape will be automatically set to "FWD".

Note
When the cassette holder is opened, the direction of the tape will be automatically set to "FWD".

Note
When the cassette holder is opened, the direction of the tape will be automatically set to "FWD".

Note
When the cassette holder is opened, the direction of the tape will be automatically set to "FWD".

Note
When the cassette holder is opened, the direction of the tape will be automatically set to "FWD".

← ± æ

Ä± µ® (Ä± µ®)
Ä± µ® VOL f1 Ä± µ® 6 i§µµ CE
Ä± µ® (Ä± µ®) Ä± µ®

Ä± µ® (Ä± µ®)
Ä± µ® (Ä± µ®) Ä± µ® (Ä± µ®)
Ä± µ® (Ä± µ®) Ä± µ® (Ä± µ®)
Ä± µ® (Ä± µ®) Ä± µ® (Ä± µ®)

Ä± µ® (Ä± µ®)
Ä± µ® (Ä± µ®) Ä± µ® (Ä± µ®)
Ä± µ® (Ä± µ®) Ä± µ® (Ä± µ®)

Ä± µ® (Ä± µ®)
Ä± µ® (Ä± µ®) Ä± µ® (Ä± µ®)
Ä± µ® (Ä± µ®) Ä± µ® (Ä± µ®)

Ä± µ® (Ä± µ®)
Ä± µ® (Ä± µ®) Ä± µ® (Ä± µ®)
Ä± µ® (Ä± µ®) Ä± µ® (Ä± µ®)

Ä± µ® (Ä± µ®)
Ä± µ® (Ä± µ®) Ä± µ® (Ä± µ®)
Ä± µ® (Ä± µ®) Ä± µ® (Ä± µ®)

Ä± µ® (Ä± µ®)
Ä± µ® (Ä± µ®) Ä± µ® (Ä± µ®)
Ä± µ® (Ä± µ®) Ä± µ® (Ä± µ®)

Ä± µ® (Ä± µ®)
Ä± µ® (Ä± µ®) Ä± µ® (Ä± µ®)
Ä± µ® (Ä± µ®) Ä± µ® (Ä± µ®)

Ä± µ® (Ä± µ®)
Ä± µ® (Ä± µ®) Ä± µ® (Ä± µ®)
Ä± µ® (Ä± µ®) Ä± µ® (Ä± µ®)

Ä± µ® (Ä± µ®)
Ä± µ® (Ä± µ®) Ä± µ® (Ä± µ®)
Ä± µ® (Ä± µ®) Ä± µ® (Ä± µ®)

Ä± µ® (Ä± µ®)
Ä± µ® (Ä± µ®) Ä± µ® (Ä± µ®)
Ä± µ® (Ä± µ®) Ä± µ® (Ä± µ®)

Ä± µ® (Ä± µ®)
Ä± µ® (Ä± µ®) Ä± µ® (Ä± µ®)
Ä± µ® (Ä± µ®) Ä± µ® (Ä± µ®)

Ä± µ® (Ä± µ®)
Ä± µ® (Ä± µ®) Ä± µ® (Ä± µ®)
Ä± µ® (Ä± µ®) Ä± µ® (Ä± µ®)

Ä± µ® (Ä± µ®)
Ä± µ® (Ä± µ®) Ä± µ® (Ä± µ®)
Ä± µ® (Ä± µ®) Ä± µ® (Ä± µ®)

Ä± µ® (Ä± µ®)
Ä± µ® (Ä± µ®) Ä± µ® (Ä± µ®)
Ä± µ® (Ä± µ®) Ä± µ® (Ä± µ®)

Ä± µ® (Ä± µ®)
Ä± µ® (Ä± µ®) Ä± µ® (Ä± µ®)
Ä± µ® (Ä± µ®) Ä± µ® (Ä± µ®)

Ä± µ® (Ä± µ®)
Ä± µ® (Ä± µ®) Ä± µ® (Ä± µ®)
Ä± µ® (Ä± µ®) Ä± µ® (Ä± µ®)

Ä± µ® (Ä± µ®)
Ä± µ® (Ä± µ®) Ä± µ® (Ä± µ®)
Ä± µ® (Ä± µ®) Ä± µ® (Ä± µ®)

← ± æ

Ä± µ® (Ä± µ®)
Ä± µ® (Ä± µ®) Ä± µ® (Ä± µ®)
Ä± µ® (Ä± µ®) Ä± µ® (Ä± µ®)

Ä± µ® (Ä± µ®)
Ä± µ® (Ä± µ®) Ä± µ® (Ä± µ®)
Ä± µ® (Ä± µ®) Ä± µ® (Ä± µ®)

Ä± µ® (Ä± µ®)
Ä± µ® (Ä± µ®) Ä± µ® (Ä± µ®)
Ä± µ® (Ä± µ®) Ä± µ® (Ä± µ®)

Ä± µ® (Ä± µ®)
Ä± µ® (Ä± µ®) Ä± µ® (Ä± µ®)
Ä± µ® (Ä± µ®) Ä± µ® (Ä± µ®)

Ä± µ® (Ä± µ®)
Ä± µ® (Ä± µ®) Ä± µ® (Ä± µ®)
Ä± µ® (Ä± µ®) Ä± µ® (Ä± µ®)

Ä± µ® (Ä± µ®)
Ä± µ® (Ä± µ®) Ä± µ® (Ä± µ®)
Ä± µ® (Ä± µ®) Ä± µ® (Ä± µ®)

Ä± µ® (Ä± µ®)
Ä± µ® (Ä± µ®) Ä± µ® (Ä± µ®)
Ä± µ® (Ä± µ®) Ä± µ® (Ä± µ®)

Ä± µ® (Ä± µ®)
Ä± µ® (Ä± µ®) Ä± µ® (Ä± µ®)
Ä± µ® (Ä± µ®) Ä± µ® (Ä± µ®)

Ä± µ® (Ä± µ®)
Ä± µ® (Ä± µ®) Ä± µ® (Ä± µ®)
Ä± µ® (Ä± µ®) Ä± µ® (Ä± µ®)

Ä± µ® (Ä± µ®)
Ä± µ® (Ä± µ®) Ä± µ® (Ä± µ®)
Ä± µ® (Ä± µ®) Ä± µ® (Ä± µ®)

Ä± µ® (Ä± µ®)
Ä± µ® (Ä± µ®) Ä± µ® (Ä± µ®)
Ä± µ® (Ä± µ®) Ä± µ® (Ä± µ®)

Ä± µ® (Ä± µ®)
Ä± µ® (Ä± µ®) Ä± µ® (Ä± µ®)
Ä± µ® (Ä± µ®) Ä± µ® (Ä± µ®)

Ä± µ® (Ä± µ®)
Ä± µ® (Ä± µ®) Ä± µ® (Ä± µ®)
Ä± µ® (Ä± µ®) Ä± µ® (Ä± µ®)

Ä± µ® (Ä± µ®)
Ä± µ® (Ä± µ®) Ä± µ® (Ä± µ®)
Ä± µ® (Ä± µ®) Ä± µ® (Ä± µ®)

Ä± µ® (Ä± µ®)
Ä± µ® (Ä± µ®) Ä± µ® (Ä± µ®)
Ä± µ® (Ä± µ®) Ä± µ® (Ä± µ®)

Ä± µ® (Ä± µ®)
Ä± µ® (Ä± µ®) Ä± µ® (Ä± µ®)
Ä± µ® (Ä± µ®) Ä± µ® (Ä± µ®)

Ä± µ® (Ä± µ®)
Ä± µ® (Ä± µ®) Ä± µ® (Ä± µ®)
Ä± µ® (Ä± µ®) Ä± µ® (Ä± µ®)

Ä± µ® (Ä± µ®)
Ä± µ® (Ä± µ®) Ä± µ® (Ä± µ®)
Ä± µ® (Ä± µ®) Ä± µ® (Ä± µ®)

← ± æ

Ä± µ® (Ä± µ®)
Ä± µ® (Ä± µ®) Ä± µ® (Ä± µ®)
Ä± µ® (Ä± µ®) Ä± µ® (Ä± µ®)

Ä± µ® (Ä± µ®)
Ä± µ® (Ä± µ®) Ä± µ® (Ä± µ®)
Ä± µ® (Ä± µ®) Ä± µ® (Ä± µ®)

Ä± µ® (Ä± µ®)
Ä± µ® (Ä± µ®) Ä± µ® (Ä± µ®)
Ä± µ® (Ä± µ®) Ä± µ® (Ä± µ®)

Ä± µ® (Ä± µ®)
Ä± µ® (Ä± µ®) Ä± µ® (Ä± µ®)
Ä± µ® (Ä± µ®) Ä± µ® (Ä± µ®)

Ä± µ® (Ä± µ®)
Ä± µ® (Ä± µ®) Ä± µ® (Ä± µ®)
Ä± µ® (Ä± µ®) Ä± µ® (Ä± µ®)

Ä± µ® (Ä± µ®)
Ä± µ® (Ä± µ®) Ä± µ® (Ä± µ®)
Ä± µ® (Ä± µ®) Ä± µ® (Ä± µ®)

Ä± µ® (Ä± µ®)
Ä± µ® (Ä± µ®) Ä± µ® (Ä± µ®)
Ä± µ® (Ä± µ®) Ä± µ® (Ä± µ®)

Ä± µ® (Ä± µ®)
Ä± µ® (Ä± µ®) Ä± µ® (Ä± µ®)
Ä± µ® (Ä± µ®) Ä± µ® (Ä± µ®)

Ä± µ® (Ä± µ®)
Ä± µ® (Ä± µ®) Ä± µ® (Ä± µ®)
Ä± µ® (Ä± µ®) Ä± µ® (Ä± µ®)

Ä± µ® (Ä± µ®)
Ä± µ® (Ä± µ®) Ä± µ® (Ä± µ®)
Ä± µ® (Ä± µ®) Ä± µ® (Ä± µ®)

Ä± µ® (Ä± µ®)
Ä± µ® (Ä± µ®) Ä± µ® (Ä± µ®)
Ä± µ® (Ä± µ®) Ä± µ® (Ä± µ®)

Ä± µ® (Ä± µ®)
Ä± µ® (Ä± µ®) Ä± µ® (Ä± µ®)
Ä± µ® (Ä± µ®) Ä± µ® (Ä± µ®)

Ä± µ® (Ä± µ®)
Ä± µ® (Ä± µ®) Ä± µ® (Ä± µ®)
Ä± µ® (Ä± µ®) Ä± µ® (Ä± µ®)

Ä± µ® (Ä± µ®)
Ä± µ® (Ä± µ®) Ä± µ® (Ä± µ®)
Ä± µ® (Ä± µ®) Ä± µ® (Ä± µ®)

Ä± µ® (Ä± µ®)
Ä± µ® (Ä± µ®) Ä± µ® (Ä± µ®)
Ä± µ® (Ä± µ®) Ä± µ® (Ä± µ®)

Ä± µ® (Ä± µ®)
Ä± µ® (Ä± µ®) Ä± µ® (Ä± µ®)
Ä± µ® (Ä± µ®) Ä± µ® (Ä± µ®)

Ä± µ® (Ä± µ®)
Ä± µ® (Ä± µ®) Ä± µ® (Ä± µ®)
Ä± µ® (Ä± µ®) Ä± µ® (Ä± µ®)

Ä± µ® (Ä± µ®)
Ä± µ® (Ä± µ®) Ä± µ® (Ä± µ®)
Ä± µ® (Ä± µ®) Ä± µ® (Ä± µ®)

← ± æ

Ä± µ® (Ä± µ®)
Ä± µ® (Ä± µ®) Ä± µ® (Ä± µ®)
Ä± µ® (Ä± µ®) Ä± µ® (Ä± µ®)

Ä± µ® (Ä± µ®)
Ä± µ® (Ä± µ®) Ä± µ® (Ä± µ®)
Ä± µ® (Ä± µ®) Ä± µ® (Ä± µ®)

Ä± µ® (Ä± µ®)
Ä± µ® (Ä± µ®) Ä± µ® (Ä± µ®)
Ä± µ® (Ä± µ®) Ä± µ® (Ä± µ®)

Ä± µ® (Ä± µ®)
Ä± µ® (Ä± µ®) Ä± µ® (Ä± µ®)
Ä± µ® (Ä± µ®) Ä± µ® (Ä± µ®)

Ä± µ® (Ä± µ®)
Ä± µ® (Ä± µ®) Ä± µ® (Ä± µ®)
Ä± µ® (Ä± µ®) Ä± µ® (Ä± µ®)

Ä± µ® (Ä± µ®)
Ä± µ® (Ä± µ®) Ä± µ® (Ä± µ®)
Ä± µ® (Ä± µ®) Ä± µ® (Ä± µ®)

Ä± µ® (Ä± µ®)
Ä± µ® (Ä± µ®) Ä± µ® (Ä± µ®)
Ä± µ® (Ä± µ®) Ä± µ® (Ä± µ®)

Ä± µ® (Ä± µ®)
Ä± µ® (Ä± µ®) Ä± µ® (Ä± µ®)
Ä± µ® (Ä± µ®) Ä± µ® (Ä± µ®)

Ä± µ® (Ä± µ®)
Ä± µ® (Ä± µ®) Ä± µ® (Ä± µ®)
Ä± µ® (Ä± µ®) Ä± µ® (Ä± µ®)

Ä± µ® (Ä± µ®)
Ä± µ® (Ä± µ®) Ä± µ® (Ä± µ®)
Ä± µ® (Ä± µ®) Ä± µ® (Ä± µ®)

Ä± µ® (Ä± µ®)
Ä± µ® (Ä± µ®) Ä± µ® (Ä± µ®)
Ä± µ® (Ä± µ®) Ä± µ® (Ä± µ®)

Ä± µ® (Ä± µ®)
Ä± µ® (Ä± µ®) Ä± µ® (Ä± µ®)
Ä± µ® (Ä± µ®) Ä± µ® (Ä± µ®)

Ä± µ® (Ä± µ®)
Ä± µ® (Ä± µ®) Ä± µ® (Ä± µ®)
Ä± µ® (Ä± µ®) Ä± µ® (Ä± µ®)

Ä± µ® (Ä± µ®)
Ä± µ® (Ä± µ®) Ä± µ® (Ä± µ®)
Ä± µ® (Ä± µ®) Ä± µ® (Ä± µ®)

Ä± µ® (Ä± µ®)
Ä± µ® (Ä± µ®) Ä± µ® (Ä± µ®)
Ä± µ® (Ä± µ®) Ä± µ® (Ä± µ®)

Ä± µ® (Ä± µ®)
Ä± µ® (Ä± µ®) Ä± µ® (Ä± µ®)
Ä± µ® (Ä± µ®) Ä± µ® (Ä± µ®)

Ä± µ® (Ä± µ®)
Ä± µ® (Ä± µ®) Ä± µ® (Ä± µ®)
Ä± µ® (Ä± µ®) Ä± µ® (Ä± µ®)

Ä± µ® (Ä± µ®)
Ä± µ® (Ä± µ®) Ä± µ® (Ä± µ®)
Ä± µ® (Ä± µ®) Ä± µ® (Ä± µ®)

← ± æ

Ä± µ® (Ä± µ®)
Ä± µ® (Ä± µ®) Ä± µ® (Ä± µ®)
Ä± µ® (Ä± µ®) Ä± µ® (Ä± µ®)

Ä± µ® (Ä± µ®)
Ä± µ® (Ä± µ®) Ä± µ® (Ä± µ®)
Ä± µ® (Ä± µ®) Ä± µ® (Ä± µ®)

Ä± µ® (Ä± µ®)
Ä± µ® (Ä± µ®) Ä± µ® (Ä± µ®)
Ä± µ® (Ä± µ®) Ä± µ® (Ä± µ®)

Ä± µ® (Ä± µ®)
Ä± µ® (Ä± µ®) Ä± µ® (Ä± µ®)
Ä± µ® (Ä± µ®) Ä± µ® (Ä± µ®)

Ä± µ® (Ä± µ®)
Ä± µ® (Ä± µ®) Ä± µ® (Ä± µ®)
Ä± µ® (Ä± µ®) Ä± µ® (Ä± µ®)

Ä± µ® (Ä± µ®)
Ä± µ® (Ä± µ®) Ä± µ® (Ä± µ®)
Ä± µ® (Ä± µ®) Ä± µ® (Ä± µ®)

Ä± µ® (Ä± µ®)
Ä± µ® (Ä± µ®) Ä± µ® (Ä± µ®)
Ä± µ® (Ä± µ®) Ä± µ® (Ä± µ®)

Ä± µ® (Ä± µ®)
Ä± µ® (Ä± µ®) Ä± µ® (Ä

