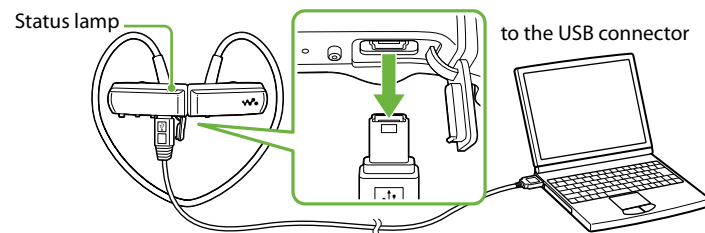


Supplied Software
The software is stored in the built-in flash memory of the player, and includes the following items:
- Content Transfer
- WALKMAN Guide
- Operation Guide, etc.
For details on how to install, see "How to Install the Bundled Software (Operation Guide included)."
To view the Operating Guide (PDF file) on your computer, Adobe Acrobat Reader 5.0 or later, or Adobe Reader is required. You can download a free copy of Adobe Reader from the Internet.

How to Install the Bundled Software (Operation Guide included)

1 Connect the player to a running computer using the USB cable.

Note
• Use only the supplied USB cable.



2 Select the following order with the computer.
Select "start" - "My Computer" or "Computer" - "WALKMAN" - "Storage Media."

Note
• When you use the player for the first time, or if you have not used the player for a long time, the player may take some minutes to be recognized by the computer.
3 Double-click "Setup.exe."
The install wizard appears.
• When you execute "Setup.exe," the "Setup.exe" file and "Install" folder stored in the "Storage Media" folder of the player are copied to your computer for backup, and WALKMAN Guide and Content Transfer are installed to your computer.

4 Follow the on-screen instructions.
After executing "Setup.exe," the WALKMAN Guide shortcut appears on the desktop of your computer.
• With the player connected to your computer, when installation of bundled software is completed, Content Transfer starts automatically.

5 Double-click (WALKMAN Guide) on the desktop to start the WALKMAN Guide.

Hints
• You can start the WALKMAN Guide and Content Transfer from the "start" menu (displayed by clicking "start").
• If you delete the "Setup.exe" file and "Install" folder in the player by formatting the built-in flash memory of the player, copy this data from the "Backup" folder on the computer to your player. Then connecting the player to the computer to be installed, follow the above procedure from step 1 to install. The backup data is preserved in the following "C:" drive on your computer by the default install setting.
C:\Program Files\Sony\WALKMAN Guide\NWZ-W250\Backup

What can you do with the WALKMAN Guide ?

- The WALKMAN Guide includes the following items:
- Operation Guide
 - Customer Registration Link
 - Customer Support Site Link
 - Other useful Links
Includes link information, etc., on the download site.

The bundled items differ depending on the country/region of purchase.

Hint

• After executing "Setup.exe" you can use the free space in the "Storage Media" folder more effectively by formatting the built-in flash memory of the player. To format the built-in flash memory of the player, see "Formatting the player" on the reverse side.

What is ZAPPIN Playback?



ZAPPIN enables sequential playback of song clips at a preset duration.

Normal playback



Changes to ZAPPIN.

ZAPPIN playback



Short recognizable clips of songs (such as the most melodic or rhythmical section)
The ZAPPIN playback time for song clips can be set to either "Short" or "Long."

Returns to normal playback and restarts playback of the current song from the beginning.

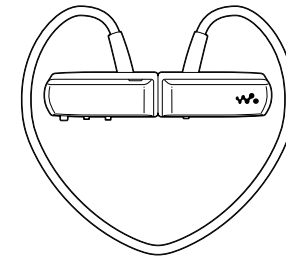
Normal playback



See "3 Playing Music" for details on operations.

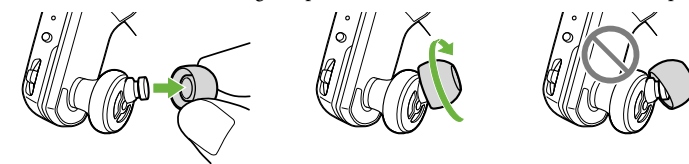
Checking Supplied Accessories

- This player (1)
- Earbuds (Size S, L) (Supplied in pairs)
- Operation Guide (this manual) (1)
- USB cable* (1)
- Holder (1)
- Notes on Water Resistant Specifications (1)
- * Use only the supplied USB cable.



How to install the earbuds

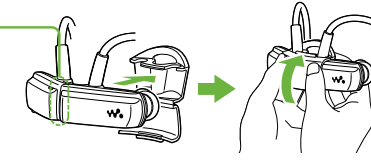
At purchase, M size earbuds are installed (S and L sizes are also supplied). To enjoy better sound quality, change the size of the earbuds or adjust the earbud position to fit in your ears comfortably and snugly. When you change the earbuds, twist while installing them firmly on the player to prevent the earbud from detaching and remaining in your ear. If an earbud becomes damaged, optional earbuds (EP-EX1) are available for purchase.



How to store the player into the holder

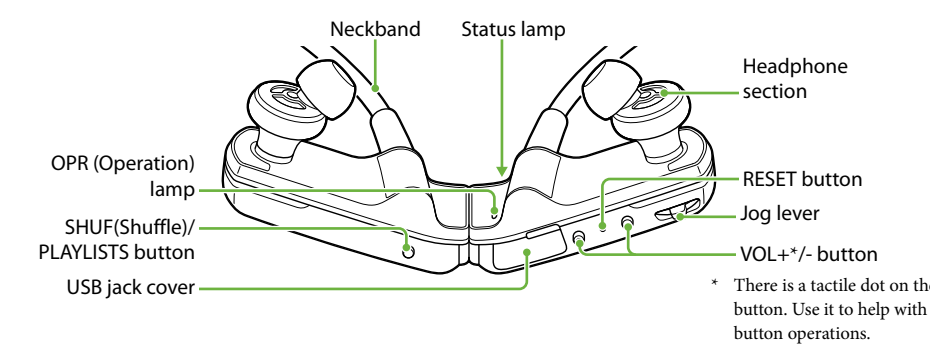
To prevent magnetic leakage, store the player in the supplied holder whenever carrying or when not using the player.

The magnet is on the right side. Do not place credit cards or ATM cards, etc. (magnetic coded cards) near the player when it is not stored in the holder to prevent damage to the magnetic coding on the cards.



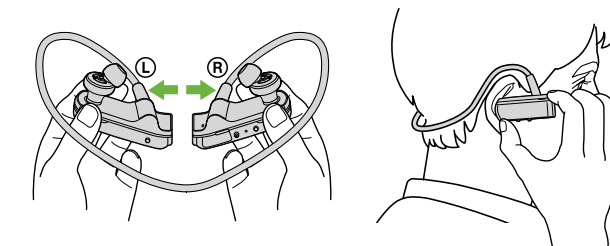
Hold the player by the holder and close the holder until it clicks.

Parts and Controls



How to place the player on your ears

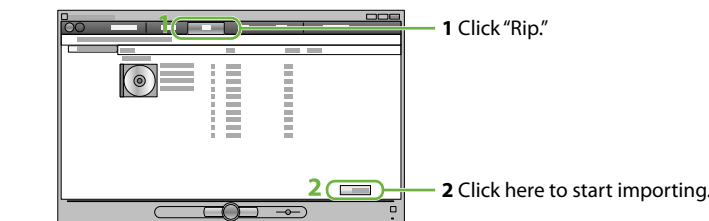
- 1 Check the left (L) and right (R) parts of the player.
- 2 Separate the left and right parts. These parts are magnetically coupled.
- 3 Hang the neckband over the back of your neck and ears, and place the earbuds into your ears.



1 Importing and Transferring Music

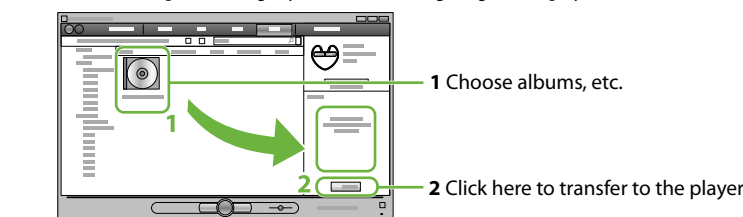
This section describes the procedure 1 from "Three Ways to Transfer Music" above. For details on the procedures 2 or 3, see the reverse side. You can transfer songs to the player using Windows Media Player on your computer. Here we describe how to import and transfer songs using Windows Media Player 11.

1 Import songs from CDs, etc., to Windows Media Player on the computer.
For details on how to import songs from CDs, etc., refer to the Help of Windows Media Player. You do not need to re-import songs that have previously been imported to Windows Media Player.



2 Connect the player to the computer by using the USB cable.

3 Transfer songs from Windows Media Player to the player.
The status lamp blinks brightly while transferring songs to the player.



Hint

• See also "Hint about transferring music" and "Notes about transferring music" on the reverse side.

2 Preparing the Player

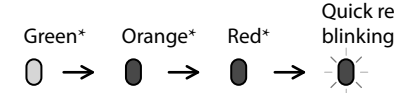
Charging the player

Upon purchase, first, charge the player.

1 Connect the player to a running computer using the USB cable.
If a screen appears presenting a choice of actions, click "Cancel."
Charging starts. The status lamp blinks slowly during charging. When charging is completed, the status lamp will stop blinking and light dimly while the player is connected to the computer. For details about charging time and the battery duration, see "Specifications" on the reverse side.

Checking the remaining battery power

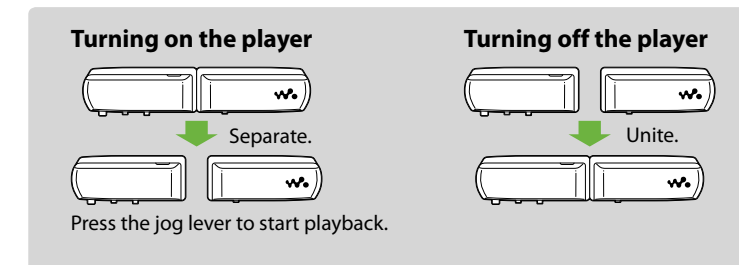
Remaining battery power is indicated in the OPR lamp. When the OPR lamp changes to red, recharge the battery.



* Blinks at about 5 second intervals.

When the battery is used up, the OPR lamp blinks red quickly and a long beep is heard. You cannot operate the player.

3 Playing Music



Normal playback

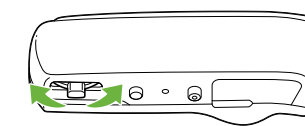


Playing songs



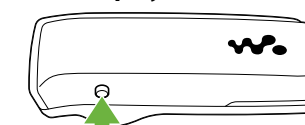
Press the jog lever upward.

Skipping to the previous/next song



Move the jog lever to ◀◀ (backward) or ▶▶ (forward). Move and hold the jog lever to skip to the beginning of the previous or next folder.

Shuffle playback



Press the SHUF(Shuffle)/PLAYLISTS button to play back songs in random order. During shuffle playback, you cannot skip to the previous or next folder, even if you move and hold the jog lever.

Playing a playlist

Press and hold the SHUF(Shuffle)/PLAYLISTS button to play a playlist. Move and hold the jog lever to ◀◀ (backward) or ▶▶ (forward) to skip to the beginning of the previous/next playlist. To return to playback of all the songs transferred to the player, press and hold the SHUF(Shuffle)/PLAYLISTS button during playback of a playlist.

Note

• When you play a playlist, only the songs registered in the playlist are played back repeatedly.

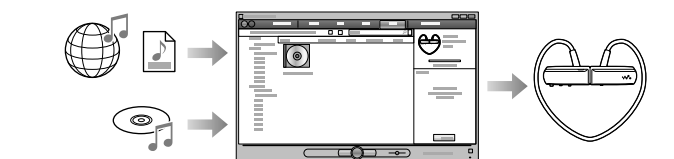
To stop playback



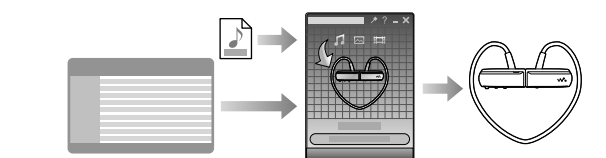
Press the jog lever upward.

Three Ways to Transfer Music

1 From CDs, etc., using Windows Media Player 11 or 12

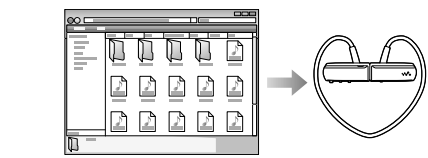


2 From iTunes*, etc., using Content Transfer



* Content Transfer supports data transfer from iTunes 9.0 to the player.

3 By drag-and drop using Windows Explorer



To play back the most melodic and rhythmical song clips

When you transfer songs using Content Transfer software with the 12 TONE ANALYSIS set to "Automatic" or "Always ON," the information of the most recognizable sections based on melody and rhythm will be found and added to each song. Then, the most melodic and rhythmical clips from each song can be played back sequentially during ZAPPIN playback. Content Transfer is included with the player. For details on how to install Content Transfer, see "How to Install the Bundled Software."

Hints

- When you press the jog lever upward or move it forward/backward after separating the left and right parts of the player, the player will turn on and start playback. If you want to skip to the previous/next song, move the jog lever after playback starts.
- After you press the jog lever, the OPR lamp blinks green and red alternately and the beep is heard repeatedly until the playback starts. Please wait until the OPR lamp blinking and the beeping stops.
- See also "Hints about playing music" on the reverse side.

ZAPPIN playback



The player plays back song clips for about 4 seconds each.

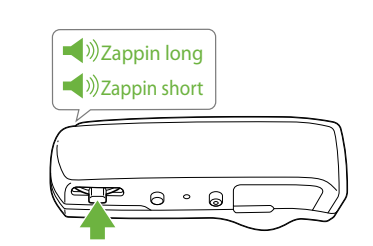
• If the most recognizable passage of the song cannot be found, the song is played back from about the 45 second point from the beginning. If the length of the song is under about 45 seconds, the song is played back from some point before the end of the song.

Skipping to the previous/next song, shuffle playback, or playlist playback during ZAPPIN playback

You can skip to the previous/next song, play back songs in random order, or play a playlist. The method of operation is the same as for normal playback.

Changing the playback time of song clips in ZAPPIN playback

The playback time for song clips can be set to either "Long" or "Short."



Press and hold the jog lever until either voice guidance is heard.

When you press and hold the jog lever until the voice guidance of "Zappin long" is heard, the playback time of song clips changes to about 15 seconds (Long). When you press and hold the jog lever until "Zappin short" is heard during "Long" playback, the playback time of song clips returns to about 4 seconds (Short).

To stop playback completely during ZAPPIN playback

Press the jog lever to return to normal playback, then press the jog lever again.

Disposal of Old Electrical & Electronic Equipment (Applicable in the European Union and other European countries with separate collection systems)

This symbol on the product or on its packaging indicates that this product shall not be treated as household waste. Instead it shall be handed over to the applicable collection point for the recycling of electrical and electronic equipment.

By ensuring this product is disposed of correctly, you will help prevent potential negative consequences for the environment and human health, which could otherwise be caused by inappropriate waste handling of this product. The recycling of materials will help to conserve natural resources. For more detailed information about recycling of this product, please contact your local Civic Office, your household waste disposal service or the shop where you purchased the product.

Disposal of waste batteries (applicable in the European Union and other European countries with separate collection systems)

This symbol on the battery or on the packaging indicates that the battery provided with this product shall not be treated as household waste.

On certain batteries this symbol might be used in combination with a chemical symbol. The chemical symbols for mercury (Hg) or lead (Pb) are added if the battery contains more than 0.0005% mercury or 0.004% lead.

By ensuring these batteries are disposed of correctly, you will help prevent potentially negative consequences for the environment and human health which could otherwise be caused by inappropriate waste handling of the battery. The recycling of the materials will help to conserve natural resources.

In case of products that for safety, performance or data integrity reasons require a permanent connection with an incorporated battery, this battery should be replaced by qualified service staff only.

To ensure that the battery will be treated properly, hand over the product at end-of-life to the applicable collection point for the recycling of electrical and electronic equipment.

For all other batteries, please view the section on how to remove the battery from the product safely. Hand the battery over to the applicable collection point for the recycling of waste batteries.

For more detailed information about recycling of this product or battery, please contact your local Civic Office, your household waste disposal service or the shop where you purchased the product.

License and trademark notice

- “WALKMAN” and “WALKMAN” logo are registered trademarks of Sony Corporation.
- ZAPPIN and its logo are trademarks of Sony Corporation.
- 12 TONE ANALYSIS and its logo are trademarks of Sony Corporation.
- Microsoft, Windows, Windows Vista and Windows Media are trademarks or registered trademarks of Microsoft Corporation in the United States and/or other countries.
- Adobe, Adobe Reader and Adobe Flash Player are trademarks or registered trademarks of Adobe Systems Incorporated in the United States and/or other countries.
- MPEG Layer-3 audio coding technology and patents licensed from Fraunhofer IIS and Thomson.
- IBM and PC/AT are registered trademarks of International Business Machines Corporation.
- Apple, Macintosh and iTunes are trademarks of Apple Inc., registered in the U.S. and other countries.
- Pentium is a trademark or a registered trademark of Intel Corporation.
- All other trademarks and registered trademarks are trademarks or registered trademarks of their respective holders. In this manual, “ and “ marks are not specified.

This product is protected by certain intellectual property rights of Microsoft Corporation. Use or distribution of such technology outside of this product is prohibited without a license from Microsoft or an authorized Microsoft subsidiary. Content providers are using the digital rights management technology for Windows Media contained in this device (“WM-DRM”) to protect the integrity of their content (“Secure Content”) so that their intellectual property, including copyright, in such content is not misappropriated.

This device uses WM-DRM software to play Secure Content (“WM-DRM Software”). If the security of the WM-DRM Software in this device has been compromised, owners of Secure Content (“Secure Content Owners”) may request that Microsoft revoke the WM-DRM Software’s right to acquire new licenses to copy, display and/or play Secure Content. Revocation does not alter the WM-DRM Software’s ability to play unprotected content. A list of revoked WM-DRM Software is sent to your

device whenever you download a license for Secure

Content from the Internet or from a PC. Microsoft may, in conjunction with such license, also download revocation lists onto your device on behalf of Secure Content Owners.

- Information on Expat

Copyright ©1998, 1999, 2000 Thai Open Source

Software Center Ltd and Clark Cooper.

Copyright ©2001, 2002, 2003, 2004, 2005, 2006

Expat maintainers.

Permission is hereby granted, free of charge, to any person obtaining a copy of this software and associated documentation files (the “Software”), to deal in the Software without restriction, including without limitation the rights to use, copy, modify, merge, publish, distribute, sublicense, and/or sell copies of the Software, and to permit persons to whom the Software is furnished to do so, subject to the following conditions:

The above copyright notice and this permission notice shall be included in all copies or substantial portions of the Software.

THE SOFTWARE IS PROVIDED “AS IS,” WITHOUT WARRANTY OF ANY KIND, EXPRESS OR IMPLIED, INCLUDING BUT NOT LIMITED TO THE WARRANTIES OF MERCHANTABILITY, FITNESS FOR A PARTICULAR PURPOSE AND NONINFRINGEMENT.

IN NO EVENT SHALL THE AUTHORS OR COPYRIGHT HOLDERS BE LIABLE FOR ANY CLAIM, DAMAGES OR OTHER LIABILITY, WHETHER IN AN ACTION OF CONTRACT, TORT OR OTHERWISE, ARISING FROM, OUT OF OR IN CONNECTION WITH THE SOFTWARE OR THE USE OR OTHER DEALINGS IN THE SOFTWARE.

Program ©2010 Sony Corporation

Documentation ©2010 Sony Corporation