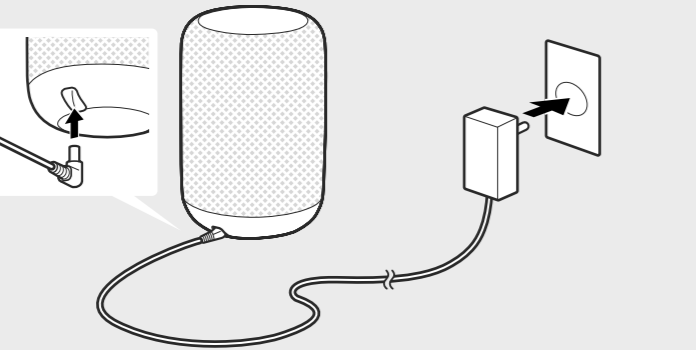


Operating Instructions

Wireless Speaker  
LF-S50G

1 Connect the AC adaptor.



2 Install the Google Home app.

Install the Google Home app on a smartphone/iPhone.



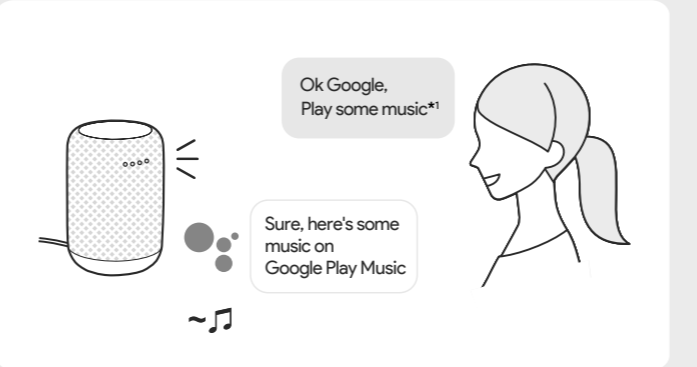
Google, Android™, Google Play, Google Home, Chromecast Built-in and other marks and logos are trademarks of Google Inc.

3 Set up Wi-Fi with App.

Follow the directions in the app to set up your speaker with Wi-Fi. Set the speaker to the smartphone/iPhone's same Wi-Fi connection.  
• Depending on your service, you may have to create an account in advance.

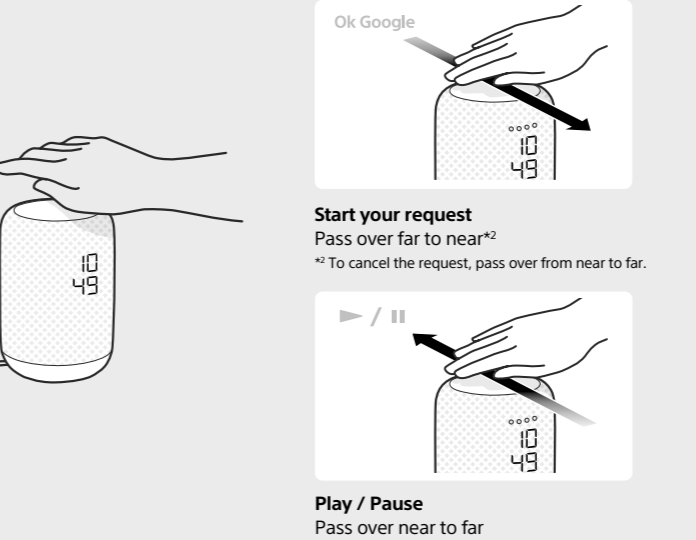


Talk to your Google Assistant.

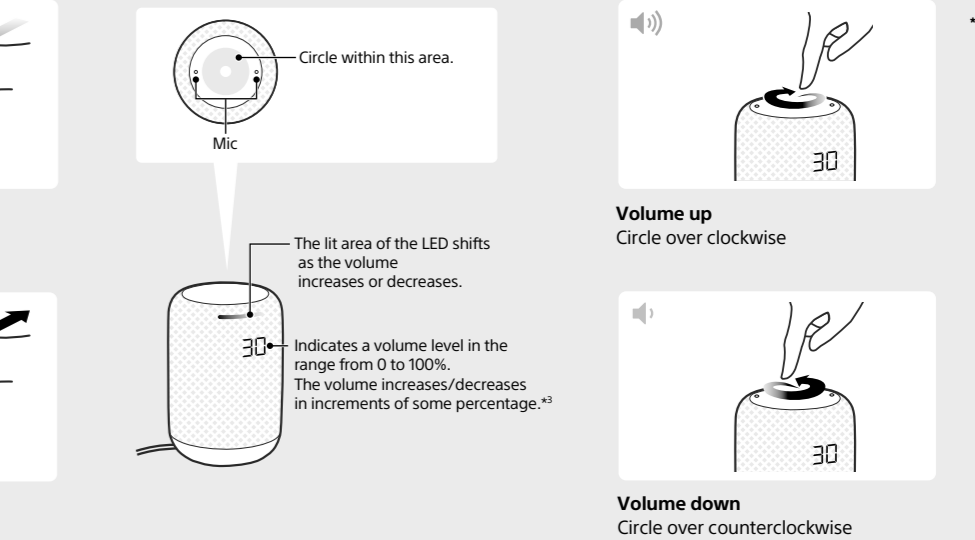


\*1 Refer to the conversation leaflet "Voice Commands" (supplied) or visit the following website for the latest voice commands;  
[assistant.google.com/intl/en\\_us/discover/](http://assistant.google.com/intl/en_us/discover/) (USA)  
[assistant.google.com/intl/en\\_uk/discover/](http://assistant.google.com/intl/en_uk/discover/) (United Kingdom)  
[assistant.google.com/intl/en\\_ca/discover/](http://assistant.google.com/intl/en_ca/discover/) (Canada)  
[assistant.google.com/intl/en\\_au/discover/](http://assistant.google.com/intl/en_au/discover/) (Australia)

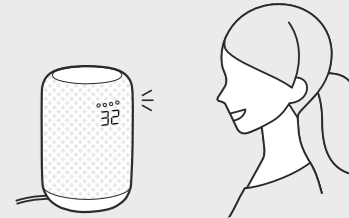
Touch-free Gesture Control



Volume Operations

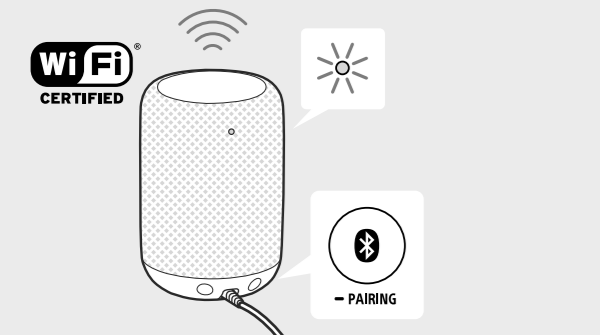


\*3 To fine-tune the volume  
Say a voice command to set the volume to your desired level.



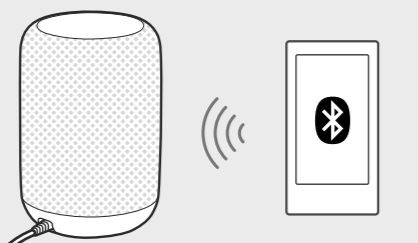
## You can also use as a BLUETOOTH® speaker

- 1 After establishing a Wi-Fi connection as described on the front side, press and hold the PAIRING button to set your speaker into Bluetooth pairing mode.

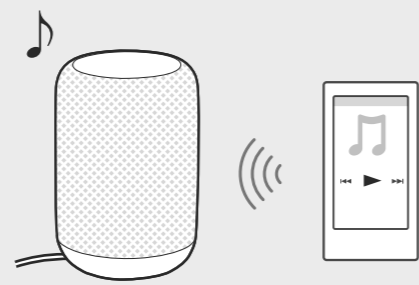


- 2 Establish a Bluetooth pairing.

From your smartphone or other device's Bluetooth settings, find and select your speaker's name.

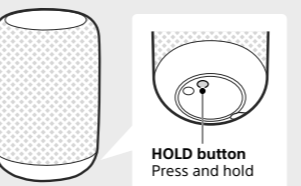


- 3 Start playback.



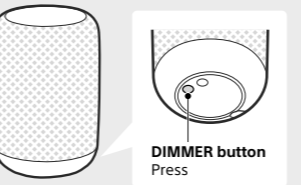
### • Lock buttons

Prevent unintentional operations (gestures/ buttons) for 3 minutes. To unlock buttons, press and hold the HOLD button again.



### • Dimmer

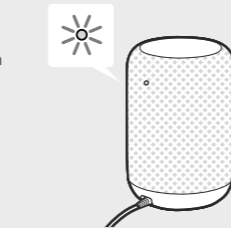
The brightness of the clock display switches between High → Middle → Low → Off every time you press this button.



### Other useful functions

## FAQs

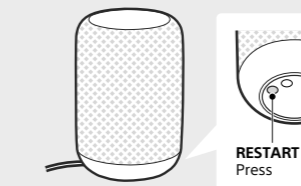
- Is the Bluetooth LED flashing? It means the firmware of your speaker has been updated; it will stop flashing on its own.



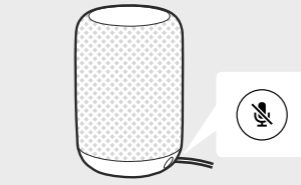
- Can you not operate your speaker or connect to a Bluetooth device? A Wi-Fi connection is required, so check whether the speaker is connected to one.



- Did your speaker turn off? Press the RESTART button.



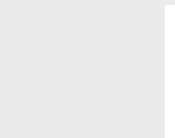
- Do you want to turn off the MIC? Press the MIC button.



- Do you want to reset your speaker? Press and hold the MIC button until the four status LEDs light in orange.

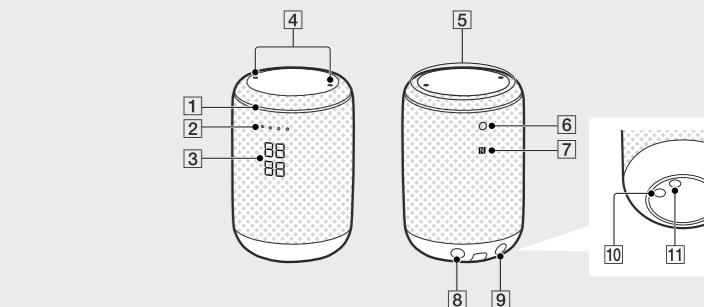
## About Help Guide (web manual)

The Help Guide describes the features of the speaker and how to use in detail. You can view the Help Guide on a smartphone or computer.



[http://rd1.sony.net/help/speaker/lf-s50g/h\\_zz/](http://rd1.sony.net/help/speaker/lf-s50g/h_zz/)

## Parts and Controls



- 1 Gesture LED
- 2 Status LEDs (for Google Assistant)
- 3 Clock display/Volume display
- 4 Built-in microphones
- 5 Gesture control sensor
- 6 Bluetooth LED

- 7 N-mark  
Touch here when connecting by One-touch (NFC)
- 8 MIC (microphone off) button
- 9 PAIRING button
- 10 DIMMER/RESTART button
- 11 HOLD button
- 12 DC IN connector