

# SONY

For Immediate Release

For further information:  
Alex Garth, (02) 7209 9100  
[alex.garth@adhesivepr.com.au](mailto:alex.garth@adhesivepr.com.au)  
Adhesive PR

Jamie Wong  
[PR.sanz@sony.com](mailto:PR.sanz@sony.com)  
Sony Australia & New Zealand

## Sony Adds to Its Wireless Headphones Range with the WF-C500 and WH-XB910N



WF-C500



WH-XB910N

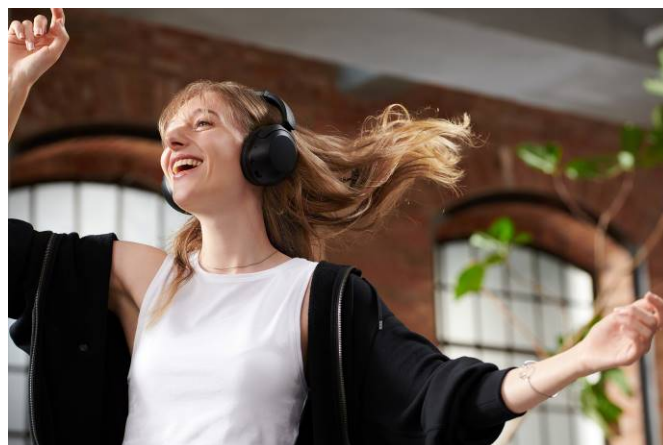
- The compact WF-C500 truly wireless headphones combine high quality sound with unique sound customisation, ease of use, long battery life and water resistance for those on-the-go
- Immerse yourself in bass with the WH-XB910N over-ear wireless headphones with EXTRA BASS™, improved noise cancelling, all-day comfort, crystal clear call quality and Multipoint connection

**SYDNEY AUSTRALIA – WEDNESDAY 29<sup>th</sup> SEPTEMBER 2021** Sony is making it even easier to listen to music your way, with the announcement of two new wireless headphones – [WF-C500](#) and [WH-XB910N](#).

Sony's newest truly wireless headphones, the **WF-C500**, are ideal if you want to make the switch to truly wireless headphones. With unique sound customisation, a compact design, easy to use Bluetooth® pairing, long lasting battery life and a water-resistant design, these headphones will fit seamlessly into your listening experience.



The **WH-XB910N** overhead headphones delivers big sound to the listener with improved noise cancelling and outstanding club-like bass.



### **WF-C500 - Small size, uncompromising sound**

The **WF-C500** truly wireless headphones have a compact design so they fit snugly in your ear. But don't let their size fool you. The **WF-C500** deliver high quality sound thanks to DSEE (Digital Sound Enhancement Engine). This restores high frequency sound and fine fade-out sound to the track you're listening to and create a more authentic listening experience.

Whether you're listening to electrifying pop or bassy rap, the **WF-C500** allow you to tailor your sound using the Equalizer setting in the "Sony | Headphones Connect" app. You can choose from a variety of settings to match sound with the music genre you're listening to or even create and save your own settings.



### **Comfort is key**

Designed to be small and light, the **WF-C500** fit securely in your ears, making them the perfect companion wherever you go. Their rounded shape makes them a pleasure to wear, leaving you free to focus on what matters – your music. The headphones' new ergonomic surface design helps to create a more stable fit.

### **Compact and Stylish Case**

The WF-C500's cylindrical charging case is small and easy to carry around in a pocket or bag so you can take the earbuds anywhere you go. Its translucent lid with a texture like frosted glass gives the case a stylish, luxurious look and feel<sup>1</sup>.



## Enjoy an effortless listening experience

The **WF-C500** have been specially designed to make every day listening trouble-free. The easy operation buttons not only let you play, stop or skip through tracks and adjust the volume – they also offer an easy way to access your preferred voice assistant, Google Assistant or Siri.

At the click of a button you can connect to your preferred voice assistant to get directions, play music and send messages<sup>2</sup>. Plus, conversations flow freely with hands-free calling, now clearer than ever with a high-quality built-in microphone.



## Great for on the go

The headphones will provide you with up to 10 hours of battery life, and thanks to the handy charging case you can enjoy up to 20 hours in total. The **WF-C500** are perfect for on the go listening and if you're in a rush you can easily top up the battery life with a 10-minute quick charge that gives you up to an hour of extra playtime<sup>3</sup>.

With an IPX4 water resistance rating<sup>4</sup>, splashes and sweat are no problem for the **WF-C500**, meaning you can keep moving to the music no matter what.

The **WF-C500** are ideal for multitasking too. If you want to listen to your music while still being able to have a conversation, remove one earbud only from the charging case and use as normal<sup>5</sup>.

A stable and reliable Bluetooth® connection creates a seamless and uninterrupted listening experience that ensures it's just you and the music. The **WF-C500**'s Bluetooth® chip transmits sound to left and right ears simultaneously, along with optimised antenna design ensuring outstanding listening. And with low audio latency, your favourite movies just got better too.

### **Bring the party anywhere, with club-like bass on the WH-XB910N**

The **WH-XB910N** overhead headphones feature exceptional bass with improved noise cancelling to replicate the feel of your favourite festivals or clubs. The **WH-XB910N** feature EXTRA BASS™ for an impressively deep, punchy sound. A dedicated bass duct on the headphone housing and increased air-tightness between the driver units and eardrums help to create precise rhythms that elevate every track. All this is achieved while still maintaining vocal clarity making it sound as though your favourite artists are performing in your bedroom.



With Dual Noise Sensor technology, the **WH-XB910N** take digital noise cancelling to the next level so you can truly shut out the world around you.

### **Crystal clear calls**

The **WH-XB910N** feature Precise Voice Pickup Technology, which combines two built-in microphones with advanced audio signal processing, to pick up your voice clearly and precisely for hands-free calls.



### **Give your listening experience a boost**

The **WH-XB910N** also use DSEE (Digital Sound Enhancement Engine) in order to restore your favourite tracks to a high-quality sound, truer to the original recording. Plus, you can tailor your sound, just how you like it with the Equalizer feature in the “Sony | Headphones Connect” app.

Using their two feedforward and feedback mics, the **WH-XB910N** capture more of the ambient sound around you, meaning you can enjoy a more natural listening experience that keeps you connected to your environment. The “Sony | Headphones Connect” app even allows you to adjust the level of ambient noise you hear, meaning no unwanted sounds will be let into the party.



### **Enjoy smarter listening**

Smart features will let you tailor your listening experience to how you like it. The **WH-XB910N** use Adaptive Sound Control which senses where you are and what you're doing, in turn adjusting the ambient sound settings accordingly - so you can enjoy the perfect listening experience whether you're out and about in a crowd or alone in a quiet room.

Adaptive Sound Control even learns to recognise the locations you frequently visit and tailors the sound to suit your environment. From the office to the gym, and even your favourite café, you can enjoy stunning sound no matter where you are.

### **Long lasting battery to keep the party going**

With up to 30 hours of battery life<sup>6</sup>, the **WH-XB910N** provide enough power for lengthy road trips and long festival weekends. And if you are running low, 10-minute quick charge gives you up to 4.5 hours' worth of extra play time with an optional AC adapter.



The **WH-XB910N** also features Multipoint connection which means the headphones can be paired with two Bluetooth® devices at once. So when you receive a call, your headphones know which device is ringing and seamlessly connect to the right one automatically. Switching devices is as easy as just pressing a button.

The **WH-XB910N** give you the control you need, all at your fingertips. You can change track, adjust volume and take or make calls by tapping or swiping the touch panel on the side of the headphones. You can easily tune into your surroundings by simply placing your hand over the housing, instantly letting in any ambient sound (Sony's Quick Attention Mode).

The **WH-XB910N** are Google Assistant and Alexa compatible<sup>7</sup>, helping you with everyday tasks, for hands-free help on the go. You can connect with friends, get information, listen to music, set reminders and more.

### **All-day music, all-day comfort**

The **WH-XB910N** are equipped with soft, oval-shaped earpads so you'll never need to take a break from your favourite music, movies or shows, making these headphones the perfect companion for your travels. This is thanks to a comfortable synthetic leather and urethane materials with optimum ear pad structure and dimensions for exceptional wearability.



With a handy design, the **WH-XB910N** allow the ear cups to swivel inwards, to be neatly packed into a compact and durable carry case, which includes a cable for wired listening so you can take your music with you wherever you go.



### **Find them with Fast Pair**

The **WF-C500** and **WH-XB910N** both support Google's Fast Pair feature which means you can pair the headphones with your Android device quickly and easily. Plus Swift Pair also makes it quick and easy to pair your headphones with your Windows 10 computer via Bluetooth®.

### **Fully immerse yourself with 360 Reality Audio**

Both the **WF-C500** and **WH-XB910N** allow playback of 360 Reality Audio tracks, personalised to the specific shape & size of the user's ears. With 360 Reality Audio you can bring the concert to you or listen to music as if you're with the artist in the recording studio<sup>8</sup>.

### **Sustainability matters**

Sony has not only designed the **WF-C500** and the **WH-XB910N** to be stylish but also with sustainability in mind. Zero plastic is included in the packaging material for both models, reflecting Sony's commitment to reducing the environmental impacts of their products and practices<sup>9</sup>.



## Australian Pricing and Availability

The **WF-C500 (RRP \$149.95)** will be available in black and white from early October 2021. For a full list of specs and information, please click [here](#).

The **WH-XB910N (RRP \$349.95)** will be available in black and blue November 2021. For a full list of specs and information, please click [here](#)

###

### About Sony Corporation

Sony Corporation is a creative entertainment company with a solid foundation of technology. From game and network services to music, pictures, electronics, image sensors and financial services - Sony's purpose is to fill the world with emotion through the power of creativity and technology. For more information, visit: <http://www.sony.net/>.

**About Sony Australia:** Sony Australia Limited is a wholly owned subsidiary of the Sony Corporation of Japan, and a leading manufacturer of audio, video, communications and information technology products for the consumer and professional markets. Committed to producing innovative and quality electronic products, the range includes BRAVIA TVs, Alpha digital interchangeable lens cameras and Cyber-shot digital cameras, headphones, Walkman MP3 players and other audio products, and professional broadcast equipment. For more information on Sony Australia, visit [www.sony.com.au](http://www.sony.com.au).

**Images:** Product images can be downloaded from the Sony Australia & NZ Flickr site: <https://www.flickr.com/photos/sony-anz/>. For assistance, please contact the Sony team at Adhesive PR at [sony@adhesivepr.com.au](mailto:sony@adhesivepr.com.au)

**Social Media:** Stay up-to-date with Sony Australia competitions, events, product reviews and videos via Facebook - [www.facebook.com/sonyaustralia](http://www.facebook.com/sonyaustralia), Instagram [www.instagram.com/sonyaustralia](http://www.instagram.com/sonyaustralia) and YouTube [www.youtube.com/sonyaustralia](http://www.youtube.com/sonyaustralia).

---

<sup>1</sup> The charging case is not water resistant.

<sup>2</sup> Voice assist function is compatible with Android smartphone (Google App) or iPhone (Siri). Bluetooth® connection required. Google and Android are trademarks of Google LLC. iPhone and Siri are trademarks of Apple Inc., registered in the U.S. and other countries.

<sup>3</sup> Battery life is up to 20 hours with charging case when DSEE (Digital Sound Enhancement Engine) and Equalizer are turned off.

<sup>4</sup> Protection assured against water splashing from any angle, excluding the sound tube (sound outlet) of the headphones. The charging case is not water resistant.

<sup>5</sup> Depending on how the earbuds are used, the remaining battery life of the left and right earbuds may differ. Additionally, the available operations may vary depending on the ear the headset is worn on.

<sup>6</sup> When connecting via Bluetooth®, battery life is up to 30 hours for music playback usage when DSEE is turned off and codec is ACC, up to 30 hours for communication time usage. Please note usage hours may be shorter depending on the Codec and conditions of use.

<sup>7</sup> Google and Android are trademarks of Google LLC. Amazon Alexa and all related logos are trademarks of Amazon.com, Inc. or its affiliates. Alexa features and functionality may vary by location. The Google Assistant and Alexa are not available in all languages and countries/regions. Install the Google Assistant app and set up with "Sony | Headphones Connect" app. For Amazon Alexa, install the Amazon Alexa app and set up with "Sony | Headphones Connect" app.

<sup>8</sup> "Sony | Headphones Connect" App is needed. Requires a subscription to a music streaming service – subscription fees apply. Some services may not be available in certain countries.

<sup>9</sup> Coating and adhesive materials excluded. This varies by region.